

**Cyclin E1 Antibody**  
Rabbit mAb  
Catalog # AP90816

## Specification

---

### Cyclin E1 Antibody - Product Information

Application	WB, ICC
Primary Accession	<a href="#">P24864</a>
Clonality	Monoclonal
<b>Other Names</b>	
CCNE; Ccne1; cyclin E variant ex5del; cyclin E variant ex7del; Cyclin E1; Cyclin Es; Cyclin Et; G1/S specific cyclin E; G1/S-specific cyclin-E1;	
Isotype	Rabbit IgG
Host	Rabbit
Calculated MW	47077 Da

### Cyclin E1 Antibody - Additional Information

Purification	Affinity-chromatography
Immunogen	A synthesized peptide derived from human Cyclin E1
Description	Cyclin E1 and cyclin E2 can associate with and activate CDK2. Upon DNA damage, upregulation/activation of the CDK inhibitors p21 Waf1/Cip1 and p27 Kip1 prevent cyclin E/CDK2 activation, resulting in G1/S arrest. Cyclin E1 is phosphorylated at multiple sites in vivo including Thr62, Ser88, Ser72, Thr380 and Ser384, and is controlled by at least two kinases, CDK2 and GSK-3.
Storage Condition and Buffer	Rabbit IgG in phosphate buffered saline , pH 7.4, 150mM NaCl, 0.02% sodium azide and 50% glycerol. Store at +4°C short term. Store at -20°C long term. Avoid freeze / thaw cycle.

### Cyclin E1 Antibody - Protein Information

**Name** CCNE1

**Synonyms** CCNE

**Function**

Essential for the control of the cell cycle at the G1/S (start) transition.

**Cellular Location**

Nucleus.

### Tissue Location

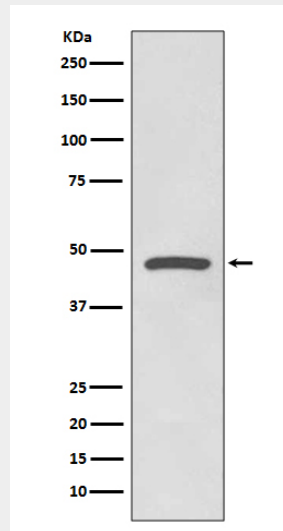
Highly expressed in testis and placenta. Low levels in bronchial epithelial cells.

### Cyclin E1 Antibody - Protocols

Provided below are standard protocols that you may find useful for product applications.

- [Western Blot](#)
- [Blocking Peptides](#)
- [Dot Blot](#)
- [Immunohistochemistry](#)
- [Immunofluorescence](#)
- [Immunoprecipitation](#)
- [Flow Cytometry](#)
- [Cell Culture](#)

### Cyclin E1 Antibody - Images



Western blot analysis of Cyclin E1 expression in HeLa cell lysate.