

Cytokeratin 1 Antibody
Rabbit mAb
Catalog # AP90814**Specification****Cytokeratin 1 Antibody - Product Information**

Application	WB
Primary Accession	P04264
Reactivity	Rat
Clonality	Monoclonal

Other Names

67 kDa cytokeratin; CK1; EHK; Epidermolytic hyperkeratosis 1; EPPK; Hair alpha protein; K1; Keratin; KRT 1; KRT1A; NEPPK; type II cytoskeletal 1; Type-II keratin Kb1;

Isotype	Rabbit IgG
Host	Rabbit
Calculated MW	66039 Da

Cytokeratin 1 Antibody - Additional Information

Purification	Affinity-chromatography
Immunogen	A synthesized peptide derived from human Cytokeratin 1
Description	May regulate the activity of kinases such as PKC and SRC via binding to integrin beta-1 (ITB1) and the receptor of activated protein C kinase 1 (RACK1).
Storage Condition and Buffer	Rabbit IgG in phosphate buffered saline , pH 7.4, 150mM NaCl, 0.02% sodium azide and 50% glycerol. Store at +4°C short term. Store at -20°C long term. Avoid freeze / thaw cycle.

Cytokeratin 1 Antibody - Protein Information**Name** KRT1**Synonyms** KRTA**Function**

May regulate the activity of kinases such as PKC and SRC via binding to integrin beta-1 (ITB1) and the receptor of activated protein C kinase 1 (RACK1). In complex with C1QBP is a high affinity receptor for kininogen-1/HMWK.

Cellular Location

Cell membrane. Cytoplasm

Tissue Location

The source of this protein is neonatal foreskin. The 67-kDa type II keratins are expressed in

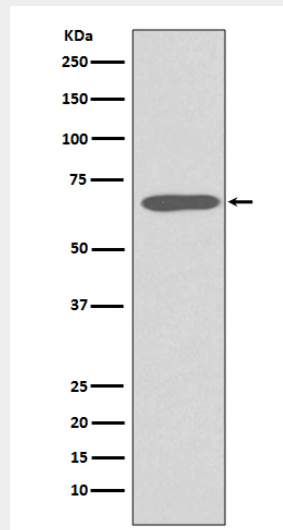
terminally differentiating epidermis

Cytokeratin 1 Antibody - Protocols

Provided below are standard protocols that you may find useful for product applications.

- [Western Blot](#)
- [Blocking Peptides](#)
- [Dot Blot](#)
- [Immunohistochemistry](#)
- [Immunofluorescence](#)
- [Immunoprecipitation](#)
- [Flow Cytometry](#)
- [Cell Culture](#)

Cytokeratin 1 Antibody - Images



Western blot analysis of Cytokeratin 1 expression in Human skin lysate.