

IRF5 Antibody
Rabbit mAb
Catalog # AP90807

Specification

IRF5 Antibody - Product Information

Application	WB, IHC, FC
Primary Accession	Q13568
Clonality	Monoclonal
Other Names	
Interferon regulatory factor 5; Interferon regulatory factor 5 bone marrow variant; IRF 5; SLEB10;	
Isotype	Rabbit IgG
Host	Rabbit
Calculated MW	56044 Da

IRF5 Antibody - Additional Information

Purification	Affinity-chromatography
Immunogen	A synthesized peptide derived from human IRF5
Description	Play an important role in pathogen defense, autoimmunity, lymphocyte development, cell growth, and susceptibility to transformation. Studies have shown that genetic variants of IRF-5 have been associated with disorders where the IFN pathway is abnormally activated, such as systemic lupus erythematosus.
Storage Condition and Buffer	Rabbit IgG in phosphate buffered saline , pH 7.4, 150mM NaCl, 0.02% sodium azide and 50% glycerol. Store at +4°C short term. Store at -20°C long term. Avoid freeze / thaw cycle.

IRF5 Antibody - Protein Information

Name IRF5 {ECO:0000303|PubMed:11303025, ECO:0000312|HGNC:HGNC:6120}

Function

Transcription factor that plays a critical role in innate immunity by activating expression of type I interferon (IFN) IFNA and INFB and inflammatory cytokines downstream of endolysosomal toll-like receptors TLR7, TLR8 and TLR9 (PubMed: [11303025](http://www.uniprot.org/citations/11303025) target="_blank">11303025, PubMed: [15695821](http://www.uniprot.org/citations/15695821) target="_blank">15695821, PubMed: [22412986](http://www.uniprot.org/citations/22412986) target="_blank">22412986, PubMed: [25326418](http://www.uniprot.org/citations/25326418) target="_blank">25326418, PubMed: [32433612](http://www.uniprot.org/citations/32433612) target="_blank">32433612). Regulates the transcription of type I IFN genes (IFN-alpha and IFN-beta) and IFN- stimulated genes (ISG) by binding to an interferon-stimulated response element

(ISRE) in their promoters (By similarity). Can efficiently activate both the IFN-beta (IFNB) and the IFN-alpha (IFNA) genes and mediate their induction downstream of the TLR-activated, MyD88-dependent pathway (By similarity). Key transcription factor regulating the IFN response during SARS-CoV-2 infection (PubMed: <http://www.uniprot.org/citations/33440148> target="_blank">33440148).

Cellular Location

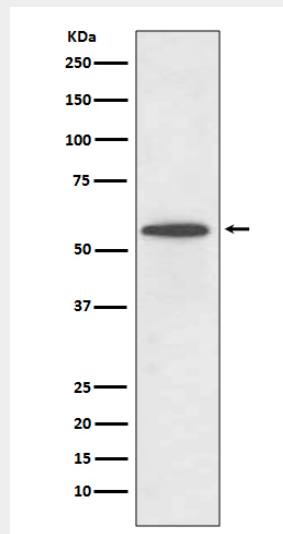
Cytoplasm. Nucleus. Note=Shuttles between the nucleus and the cytoplasm: upon activation by the TLR adapter MYD88 and subsequent phosphorylation, translocates to the nucleus

IRF5 Antibody - Protocols

Provided below are standard protocols that you may find useful for product applications.

- [Western Blot](#)
- [Blocking Peptides](#)
- [Dot Blot](#)
- [Immunohistochemistry](#)
- [Immunofluorescence](#)
- [Immunoprecipitation](#)
- [Flow Cytometry](#)
- [Cell Culture](#)

IRF5 Antibody - Images



Western blot analysis of IRF5 expression in Ramos cell lysate.