

Angiotensinogen Antibody
Rabbit mAb
Catalog # AP90803

Specification

Angiotensinogen Antibody - Product Information

Application	WB, ICC, IP
Primary Accession	P01019
Clonality	Monoclonal
Other Names	
Angiotensinogen; Serpin A8; AGT; SERPINA8; Des-Asp[1]-angiotensin II; Serine (or cysteine) proteinase inhibitor;	
Isotype	Rabbit IgG
Host	Rabbit
Calculated MW	53154 Da

Angiotensinogen Antibody - Additional Information

Purification	Affinity-chromatography
Immunogen	A synthesized peptide derived from human Angiotensinogen
Description	Angiotensin is formed from a precursor, angiotensinogen, which is produced by the liver and found in the a-globulin fraction of plasma. Angiotensin stimulation through AT1 has been shown to activate the JAK/Stat pathway involving a direct interaction between JAK2 and AT1 as demonstrated by co-immunoprecipitation.
Storage Condition and Buffer	Rabbit IgG in phosphate buffered saline , pH 7.4, 150mM NaCl, 0.02% sodium azide and 50% glycerol. Store at +4°C short term. Store at -20°C long term. Avoid freeze / thaw cycle.

Angiotensinogen Antibody - Protein Information

Name AGT ([HGNC:333](#))

Synonyms SERPINA8

Function

Essential component of the renin-angiotensin system (RAS), a potent regulator of blood pressure, body fluid and electrolyte homeostasis.

Cellular Location

Secreted

Tissue Location

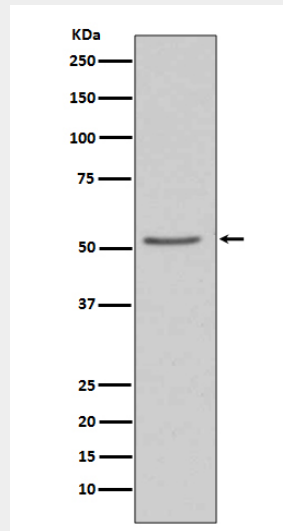
Expressed by the liver and secreted in plasma.

Angiotensinogen Antibody - Protocols

Provided below are standard protocols that you may find useful for product applications.

- [Western Blot](#)
- [Blocking Peptides](#)
- [Dot Blot](#)
- [Immunohistochemistry](#)
- [Immunofluorescence](#)
- [Immunoprecipitation](#)
- [Flow Cytometry](#)
- [Cell Culture](#)

Angiotensinogen Antibody - Images



Western blot analysis of Angiotensinogen expression in 293T cell lysate.