

CD10 Antibody
Rabbit mAb
Catalog # AP90791

Specification

CD10 Antibody - Product Information

Application	WB, FC
Primary Accession	P08473
Reactivity	Rat
Clonality	Monoclonal

Other Names

Atriopeptidase; CALLA; CD10; CD10 antigen; Enkephalinase; EPN; Membrane metallo endopeptidase (neutral endopeptidase, enkephalinase, CALLA, CD10); CALLA CD10; NEP; Neprilysin; Neutral endopeptidase;

Isotype	Rabbit IgG
Host	Rabbit
Calculated MW	85514 Da

CD10 Antibody - Additional Information

Purification	Affinity-chromatography
Immunogen	A synthesized peptide derived from human CD10
Description	CD10 is a transmembrane type II molecule and functions as a metallo-peptidase requiring zinc. Specifically, CD10 cleaves 1-3 amino-terminal amino acids from peptides with a preference for neutral amino acids (valine, iso-leucine, phenylalanine, leucine or alanine). Involved in the degradation of atrial natriuretic factor (ANF). Displays UV-inducible elastase activity toward skin preelastic and elastic fibers.
Storage Condition and Buffer	Rabbit IgG in phosphate buffered saline , pH 7.4, 150mM NaCl, 0.02% sodium azide and 50% glycerol. Store at +4°C short term. Store at -20°C long term. Avoid freeze / thaw cycle.

CD10 Antibody - Protein Information

Name MME {ECO:0000303|PubMed:27588448, ECO:0000312|HGNC:HGNC:7154}

Function

Thermolysin-like specificity, but is almost confined on acting on polypeptides of up to 30 amino acids (PubMed:15283675, PubMed:<a href="http://www.uniprot.org/citations/6208535"

target="_blank">6208535, PubMed:6349683, PubMed:8168535). Biologically important in the destruction of opioid peptides such as Met- and Leu-enkephalins by cleavage of a Gly-Phe bond (PubMed:17101991, PubMed:6349683). Catalyzes cleavage of bradykinin, substance P and neurotensin peptides (PubMed:6208535). Able to cleave angiotensin-1, angiotensin-2 and angiotensin 1-9 (PubMed:15283675, PubMed:6349683). Involved in the degradation of atrial natriuretic factor (ANF) and brain natriuretic factor (BNP(1-32)) (PubMed:16254193, PubMed:2531377, PubMed:2972276). Displays UV-inducible elastase activity toward skin preelastic and elastic fibers (PubMed:20876573).

Cellular Location

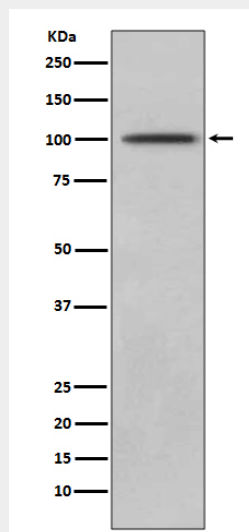
Cell membrane; Single-pass type II membrane protein

CD10 Antibody - Protocols

Provided below are standard protocols that you may find useful for product applications.

- [Western Blot](#)
- [Blocking Peptides](#)
- [Dot Blot](#)
- [Immunohistochemistry](#)
- [Immunofluorescence](#)
- [Immunoprecipitation](#)
- [Flow Cytometry](#)
- [Cell Culture](#)

CD10 Antibody - Images



Western blot analysis of CD10 expression in Jurkat lysate.