

Caspase-2 Antibody
Rabbit mAb
Catalog # AP90781

Specification

Caspase-2 Antibody - Product Information

Application	WB
Primary Accession	P42575
Reactivity	Rat
Clonality	Monoclonal

Other Names

Caspase-2; CASP-2; Neural precursor cell expressed developmentally down-regulated protein 2; NEDD-2; Protease ICH-1; Caspase-2 subunit p18; ICH1; NEDD2;

Isotype	Rabbit IgG
Host	Rabbit
Calculated MW	50685 Da

Caspase-2 Antibody - Additional Information

Purification	Affinity-chromatography
Immunogen	A synthesized peptide derived from human Caspase-2
Description	Caspase-2 is a Class I caspase with a long prodomain necessary for nuclear localization. Caspase-2 is the nuclear apoptotic respondent to cellular genotoxic stress or mitotic catastrophe. Activation occurs upon recruitment to a complex containing a p53-induced death domain protein, PIDD.
Storage Condition and Buffer	Rabbit IgG in phosphate buffered saline , pH 7.4, 150mM NaCl, 0.02% sodium azide and 50% glycerol. Store at +4°C short term. Store at -20°C long term. Avoid freeze / thaw cycle.

Caspase-2 Antibody - Protein Information

Name CASP2

Synonyms ICH1, NEDD2

Function

Is a regulator of the cascade of caspases responsible for apoptosis execution (PubMed:8087842, PubMed:11156409, PubMed:15073321). Might function by either activating some proteins required for cell death or inactivating proteins

necessary for cell survival (PubMed:15073321). Associates with PIDD1 and CRADD to form the PIDDosome, a complex that activates CASP2 and triggers apoptosis in response to genotoxic stress (PubMed:15073321).

Tissue Location

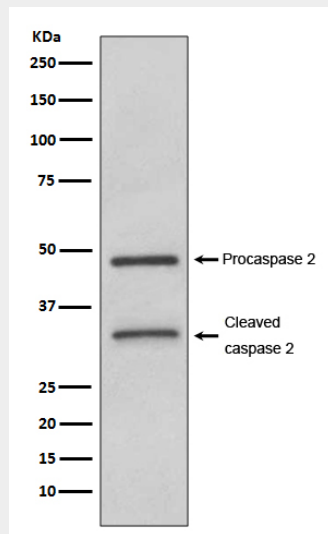
Expressed at higher levels in the embryonic lung, liver and kidney than in the heart and brain. In adults, higher level expression is seen in the placenta, lung, kidney, and pancreas than in the heart, brain, liver and skeletal muscle

Caspase-2 Antibody - Protocols

Provided below are standard protocols that you may find useful for product applications.

- [Western Blot](#)
- [Blocking Peptides](#)
- [Dot Blot](#)
- [Immunohistochemistry](#)
- [Immunofluorescence](#)
- [Immunoprecipitation](#)
- [Flow Cytometry](#)
- [Cell Culture](#)

Caspase-2 Antibody - Images



Western blot analysis of Caspase-2 expression in HeLa cell lysate.