

**IRF3 Antibody**  
Rabbit mAb  
Catalog # AP90780

## Specification

---

### IRF3 Antibody - Product Information

Application	WB, IHC, FC, ICC
Primary Accession	<a href="#">Q14653</a>
Reactivity	Rat
Clonality	Monoclonal
<b>Other Names</b>	
IRF3; IRF-3; IRF3; Interferon regulatory factor 3;	
Isotype	Rabbit IgG
Host	Rabbit
Calculated MW	47219 Da

### IRF3 Antibody - Additional Information

Purification	Affinity-chromatography
Immunogen	A synthesized peptide derived from human IRF3
Description	IRFs comprise a family of transcription factors that function within the Jak/Stat pathway to regulate interferon (IFN) and IFN-inducible gene expression in response to viral infection. IRF-3 can inhibit cell growth and plays a critical role in controlling the expression of genes in the innate immune response.
Storage Condition and Buffer	Rabbit IgG in phosphate buffered saline , pH 7.4, 150mM NaCl, 0.02% sodium azide and 50% glycerol. Store at +4°C short term. Store at -20°C long term. Avoid freeze / thaw cycle.

### IRF3 Antibody - Protein Information

**Name** IRF3 {ECO:0000303|PubMed:9803267, ECO:0000312|HGNC:HGNC:6118}

#### Function

Key transcriptional regulator of type I interferon (IFN)- dependent immune responses which plays a critical role in the innate immune response against DNA and RNA viruses (PubMed:<a href="http://www.uniprot.org/citations/22394562" target="\_blank">22394562</a>, PubMed:<a href="http://www.uniprot.org/citations/24049179" target="\_blank">24049179</a>, PubMed:<a href="http://www.uniprot.org/citations/25636800" target="\_blank">25636800</a>, PubMed:<a href="http://www.uniprot.org/citations/27302953" target="\_blank">27302953</a>, PubMed:<a href="http://www.uniprot.org/citations/31340999" target="\_blank">31340999</a>, PubMed:<a href="http://www.uniprot.org/citations/36603579" target="\_blank">36603579</a>, PubMed:<a

<http://www.uniprot.org/citations/8524823> target="\_blank">8524823</a>). Regulates the transcription of type I IFN genes (IFN-alpha and IFN-beta) and IFN-stimulated genes (ISG) by binding to an interferon-stimulated response element (ISRE) in their promoters (PubMed:<a href="http://www.uniprot.org/citations/11846977" target="\_blank">11846977</a>, PubMed:<a href="http://www.uniprot.org/citations/16846591" target="\_blank">16846591</a>, PubMed:<a href="http://www.uniprot.org/citations/16979567" target="\_blank">16979567</a>, PubMed:<a href="http://www.uniprot.org/citations/20049431" target="\_blank">20049431</a>, PubMed:<a href="http://www.uniprot.org/citations/32972995" target="\_blank">32972995</a>, PubMed:<a href="http://www.uniprot.org/citations/36603579" target="\_blank">36603579</a>, PubMed:<a href="http://www.uniprot.org/citations/8524823" target="\_blank">8524823</a>). Acts as a more potent activator of the IFN-beta (IFNB) gene than the IFN-alpha (IFNA) gene and plays a critical role in both the early and late phases of the IFNA/B gene induction (PubMed:<a href="http://www.uniprot.org/citations/16846591" target="\_blank">16846591</a>, PubMed:<a href="http://www.uniprot.org/citations/16979567" target="\_blank">16979567</a>, PubMed:<a href="http://www.uniprot.org/citations/20049431" target="\_blank">20049431</a>, PubMed:<a href="http://www.uniprot.org/citations/36603579" target="\_blank">36603579</a>). Found in an inactive form in the cytoplasm of uninfected cells and following viral infection, double-stranded RNA (dsRNA), or toll-like receptor (TLR) signaling, is phosphorylated by IKBKE and TBK1 kinases (PubMed:<a href="http://www.uniprot.org/citations/22394562" target="\_blank">22394562</a>, PubMed:<a href="http://www.uniprot.org/citations/25636800" target="\_blank">25636800</a>, PubMed:<a href="http://www.uniprot.org/citations/27302953" target="\_blank">27302953</a>, PubMed:<a href="http://www.uniprot.org/citations/36603579" target="\_blank">36603579</a>). This induces a conformational change, leading to its dimerization and nuclear localization and association with CREB binding protein (CREBBP) to form dsRNA-activated factor 1 (DRAF1), a complex which activates the transcription of the type I IFN and ISG genes (PubMed:<a href="http://www.uniprot.org/citations/16154084" target="\_blank">16154084</a>, PubMed:<a href="http://www.uniprot.org/citations/27302953" target="\_blank">27302953</a>, PubMed:<a href="http://www.uniprot.org/citations/33440148" target="\_blank">33440148</a>, PubMed:<a href="http://www.uniprot.org/citations/36603579" target="\_blank">36603579</a>). Can activate distinct gene expression programs in macrophages and can induce significant apoptosis in primary macrophages (PubMed:<a href="http://www.uniprot.org/citations/16846591" target="\_blank">16846591</a>). In response to Sendai virus infection, is recruited by TOMM70:HSP90AA1 to mitochondrion and forms an apoptosis complex TOMM70:HSP90AA1:IRF3:BAX inducing apoptosis (PubMed:<a href="http://www.uniprot.org/citations/25609812" target="\_blank">25609812</a>). Key transcription factor regulating the IFN response during SARS-CoV-2 infection (PubMed:<a href="http://www.uniprot.org/citations/33440148" target="\_blank">33440148</a>).

### Cellular Location

Cytoplasm. Nucleus Mitochondrion. Note=Shuttles between cytoplasmic and nuclear compartments, with export being the prevailing effect (PubMed:10805757, PubMed:35922005). When activated, IRF3 interaction with CREBBP prevents its export to the cytoplasm (PubMed:10805757). Recruited to mitochondria via TOMM70:HSP90AA1 upon Sendai virus infection (PubMed:25609812).

### Tissue Location

Expressed constitutively in a variety of tissues.

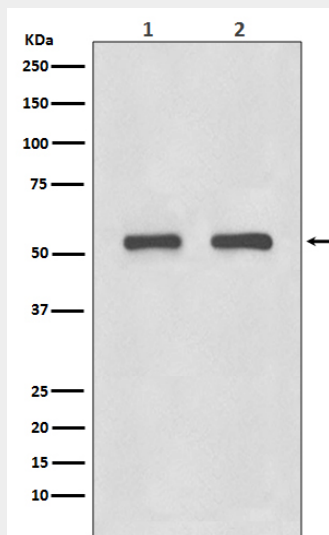
### IRF3 Antibody - Protocols

Provided below are standard protocols that you may find useful for product applications.

- [Western Blot](#)
- [Blocking Peptides](#)
- [Dot Blot](#)

- [Immunohistochemistry](#)
- [Immunofluorescence](#)
- [Immunoprecipitation](#)
- [Flow Cytometry](#)
- [Cell Culture](#)

### IRF3 Antibody - Images



Western blot analysis of IRF3 expression in (1) HeLa cell lysate; (2) 3T3 cell lysate.