

MMP11 Antibody
Rabbit mAb
Catalog # AP90779

Specification

MMP11 Antibody - Product Information

Application	WB, IHC, ICC
Primary Accession	P24347
Reactivity	Rat
Clonality	Monoclonal
Other Names	
Matrix Metalloproteinase 11; MMP-11; SL-3; SL3; ST3; STMY3; Stromelysin 3; Stromelysin III;	
Isotype	Rabbit IgG
Host	Rabbit
Calculated MW	54590 Da

MMP11 Antibody - Additional Information

Purification	Affinity-chromatography
Immunogen	A synthesized peptide derived from human MMP11
Description	The matrix metalloproteinases (MMP) are a family of peptidase enzymes responsible for the degradation of extracellular matrix components, including collagen, gelatin, fibronectin, laminin and proteoglycan. May play an important role in the progression of epithelial malignancies.
Storage Condition and Buffer	Rabbit IgG in phosphate buffered saline , pH 7.4, 150mM NaCl, 0.02% sodium azide and 50% glycerol. Store at +4°C short term. Store at -20°C long term. Avoid freeze / thaw cycle.

MMP11 Antibody - Protein Information

Name MMP11

Synonyms STMY3

Function
May play an important role in the progression of epithelial malignancies.

Cellular Location
Secreted, extracellular space, extracellular matrix

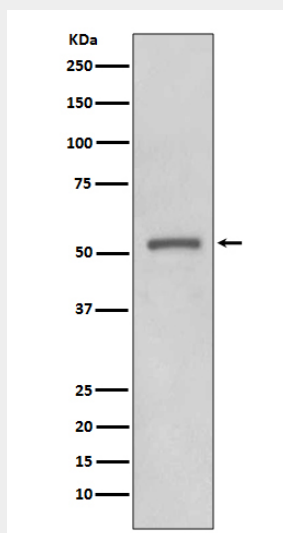
Tissue Location
Specifically expressed in stromal cells of breast carcinomas

MMP11 Antibody - Protocols

Provided below are standard protocols that you may find useful for product applications.

- [Western Blot](#)
- [Blocking Peptides](#)
- [Dot Blot](#)
- [Immunohistochemistry](#)
- [Immunofluorescence](#)
- [Immunoprecipitation](#)
- [Flow Cytometry](#)
- [Cell Culture](#)

MMP11 Antibody - Images



Western blot analysis of MMP11 expression in MCF-7 cell lysate.