

PSA/KLK3 Antibody
Rabbit mAb
Catalog # AP90776

Specification

PSA/KLK3 Antibody - Product Information

Application	WB, IHC
Primary Accession	P07288
Clonality	Monoclonal
Other Names	
Prostate-specific antigen; PSA; Gamma-seminoprotein; Seminol; Kallikrein-3; P-30 antigen; Semenogelase; KLK3; APS;	
Isotype	Rabbit IgG
Host	Rabbit
Calculated MW	28741 Da

PSA/KLK3 Antibody - Additional Information

Purification	Affinity-chromatography
Immunogen	A synthesized peptide derived from human PSA/KLK3
Description	PSA/KLK3 is a member of the glandular kallikrein subfamily of serine proteases. Upon cleavage of 7 amino-terminal amino acids, it is activated to liquefy semen in the seminal coagulum. Although PSA/KLK3 is produced in healthy individuals, investigators have found abnormally high levels in the blood of men with advanced prostate cancer.
Storage Condition and Buffer	Rabbit IgG in phosphate buffered saline , pH 7.4, 150mM NaCl, 0.02% sodium azide and 50% glycerol. Store at +4°C short term. Store at -20°C long term. Avoid freeze / thaw cycle.

PSA/KLK3 Antibody - Protein Information

Name KLK3

Synonyms APS

Function

Hydrolyzes semenogelin-1 thus leading to the liquefaction of the seminal coagulum.

Cellular Location

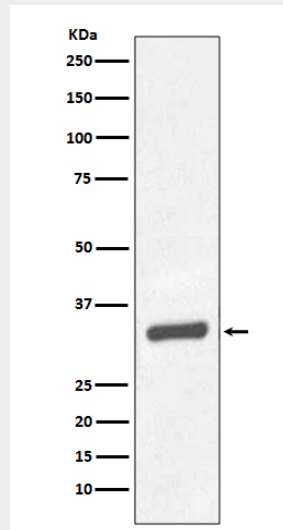
Secreted.

PSA/KLK3 Antibody - Protocols

Provided below are standard protocols that you may find useful for product applications.

- [Western Blot](#)
- [Blocking Peptides](#)
- [Dot Blot](#)
- [Immunohistochemistry](#)
- [Immunofluorescence](#)
- [Immunoprecipitation](#)
- [Flow Cytometry](#)
- [Cell Culture](#)

PSA/KLK3 Antibody - Images



Western blot analysis of PSA/KLK3 expression in Human prostate carcinoma tissue lysate.