

**SHP2 Antibody**  
Rabbit mAb  
Catalog # AP90764

## Specification

---

### SHP2 Antibody - Product Information

Application	WB, IHC, ICC, IP
Primary Accession	<a href="#">Q06124</a>
Clonality	Monoclonal
<b>Other Names</b>	
Tyrosine-protein phosphatase non-receptor type 11; Protein-tyrosine phosphatase 1D; SH-PTP2; PTP2C; PTP-1D; Protein-tyrosine phosphatase 2C; PTP-2C; SHP-2; Shp2; SH-PTP3; PTPN11; SHPTP2;	
Isotype	Rabbit IgG
Host	Rabbit
Calculated MW	68011 Da

### SHP2 Antibody - Additional Information

Purification	Affinity-chromatography
Immunogen	A synthesized peptide derived from human SHP2
Description	Belongs to the protein-tyrosine phosphatase family. Non-receptor class 2 subfamily. It participates in signaling events downstream of receptors for growth factors, cytokines, hormones, antigens, and extracellular matrices in the control of cell growth, differentiation, migration, and death.
Storage Condition and Buffer	Rabbit IgG in phosphate buffered saline , pH 7.4, 150mM NaCl, 0.02% sodium azide and 50% glycerol. Store at +4°C short term. Store at -20°C long term. Avoid freeze / thaw cycle.

### SHP2 Antibody - Protein Information

**Name** PTPN11

**Synonyms** PTP2C, SHPTP2

#### Function

Acts downstream of various receptor and cytoplasmic protein tyrosine kinases to participate in the signal transduction from the cell surface to the nucleus (PubMed: [10655584](http://www.uniprot.org/citations/10655584), PubMed: [14739280](http://www.uniprot.org/citations/14739280), PubMed: [18559669](http://www.uniprot.org/citations/18559669), PubMed: [18829466](http://www.uniprot.org/citations/18829466), PubMed: [18829466](#)),

[26742426](http://www.uniprot.org/citations/26742426), PubMed:<[28074573](http://www.uniprot.org/citations/28074573)>. Positively regulates MAPK signal transduction pathway (PubMed:<[28074573](http://www.uniprot.org/citations/28074573)>). Dephosphorylates GAB1, ARHGAP35 and EGFR (PubMed:<[28074573](http://www.uniprot.org/citations/28074573)>). Dephosphorylates ROCK2 at 'Tyr-722' resulting in stimulation of its RhoA binding activity (PubMed:<[18559669](http://www.uniprot.org/citations/18559669)>). Dephosphorylates CDC73 (PubMed:<[26742426](http://www.uniprot.org/citations/26742426)>). Dephosphorylates SOX9 on tyrosine residues, leading to inactivate SOX9 and promote ossification (By similarity). Dephosphorylates tyrosine-phosphorylated NEDD9/CAS-L (PubMed:<[19275884](http://www.uniprot.org/citations/19275884)>).

### Cellular Location

Cytoplasm. Nucleus

### Tissue Location

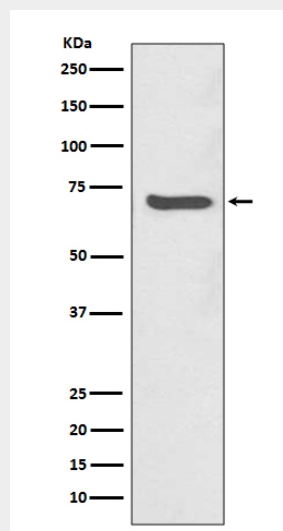
Widely expressed, with highest levels in heart, brain, and skeletal muscle.

### SHP2 Antibody - Protocols

Provided below are standard protocols that you may find useful for product applications.

- [Western Blot](#)
- [Blocking Peptides](#)
- [Dot Blot](#)
- [Immunohistochemistry](#)
- [Immunofluorescence](#)
- [Immunoprecipitation](#)
- [Flow Cytometry](#)
- [Cell Culture](#)

### SHP2 Antibody - Images



Western blot analysis of SHP2 expression in Jurkat cell lysate.