

**Cytokeratin 13 Antibody**  
Rabbit mAb  
Catalog # AP90745

**Specification**

---

**Cytokeratin 13 Antibody - Product Information**

Application	WB, IHC, ICC
Primary Accession	<a href="#">P13646</a>
Clonality	Monoclonal
<b>Other Names</b>	
Keratin, type I cytoskeletal 13; Krt1-13; Cytokeratin 13; CK13; Keratin 13; KRT13; WSN2;	
Isotype	Rabbit IgG
Host	Rabbit
Calculated MW	49588 Da

**Cytokeratin 13 Antibody - Additional Information**

Purification	Affinity-chromatography
Immunogen	A synthesized peptide derived from human Cytokeratin 13
Description	Cytokeratin 13 is a member of the keratin gene family.
Storage Condition and Buffer	Rabbit IgG in phosphate buffered saline , pH 7.4, 150mM NaCl, 0.02% sodium azide and 50% glycerol. Store at +4°C short term. Store at -20°C long term. Avoid freeze / thaw cycle.

**Cytokeratin 13 Antibody - Protein Information**

**Name** KRT13

**Function**

Type 1 keratin (Probable). Maintains postnatal tongue mucosal cell homeostasis and tissue organization in response to mechanical stress, potentially via regulation of the G1/S phase cyclins CCNE1 and CCNE2 (By similarity).

**Tissue Location**

Expressed in some epidermal sweat gland ducts (at protein level) and in exocervix, esophagus and placenta

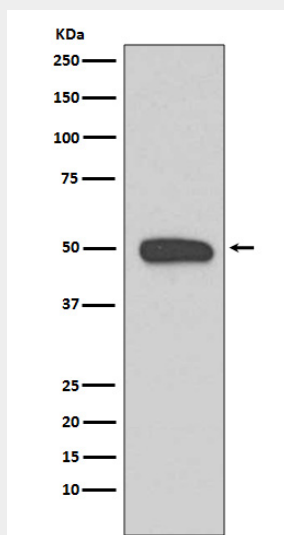
**Cytokeratin 13 Antibody - Protocols**

Provided below are standard protocols that you may find useful for product applications.

- [Western Blot](#)

- [Blocking Peptides](#)
- [Dot Blot](#)
- [Immunohistochemistry](#)
- [Immunofluorescence](#)
- [Immunoprecipitation](#)
- [Flow Cytometry](#)
- [Cell Culture](#)

### Cytokeratin 13 Antibody - Images



Western blot analysis of Cytokeratin 13 expression in A431 cell lysate.