

**Cytokeratin 6 Antibody**  
**Rabbit mAb**  
**Catalog # AP90742****Specification**

---

**Cytokeratin 6 Antibody - Product Information**

|                   |                        |
|-------------------|------------------------|
| Application       | WB, IHC, ICC           |
| Primary Accession | <a href="#">P02538</a> |
| Clonality         | Monoclonal             |

**Other Names**

CK 6A; CK 6B; CK 6C; CK 6D; CK 6E; CK-6C; CK-6E; Cytokeratin 6a; Cytokeratin 6B; Cytokeratin 6C; Cytokeratin 6D; Cytokeratin 6E; Cytokeratin-6C; Cytokeratin-6E; K6a keratin; K6b keratin; K6C; K6c keratin; K6d keratin; K6e keratin; Keratin K6h;

|               |            |
|---------------|------------|
| Isotype       | Rabbit IgG |
| Host          | Rabbit     |
| Calculated MW | 60045 Da   |

**Cytokeratin 6 Antibody - Additional Information**

|                              |  |
|------------------------------|--|
| Purification                 | Affinity-chromatography  |
| Immunogen                    | A synthesized peptide derived from human Cytokeratin 6   |
| Description                  | Keratins (cytokeratins) are intermediate filament proteins that are mainly expressed in epithelial cells. Involved in the activation of follicular keratinocytes after wounding, while it does not play a major role in keratinocyte proliferation or migration. Participates in the regulation of epithelial migration by inhibiting the activity of SRC during wound repair. |
| Storage Condition and Buffer | Rabbit IgG in phosphate buffered saline , pH 7.4, 150mM NaCl, 0.02% sodium azide and 50% glycerol. Store at +4°C short term. Store at -20°C long term. Avoid freeze / thaw cycle.  |

**Cytokeratin 6 Antibody - Protein Information****Name** KRT6A**Synonyms** K6A, KRT6D**Function**

Epidermis-specific type I keratin involved in wound healing. Involved in the activation of follicular keratinocytes after wounding, while it does not play a major role in keratinocyte proliferation or migration. Participates in the regulation of epithelial migration by inhibiting the activity of SRC during wound repair.

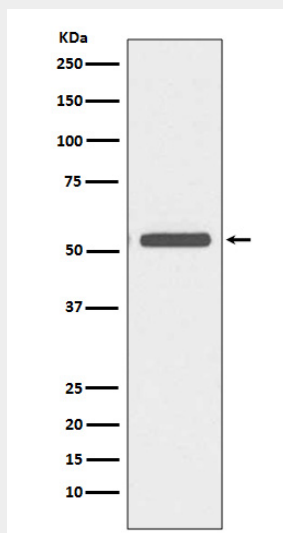
**Tissue Location**

Expressed in the corneal epithelium (at protein level).

**Cytokeratin 6 Antibody - Protocols**

Provided below are standard protocols that you may find useful for product applications.

- [Western Blot](#)
- [Blocking Peptides](#)
- [Dot Blot](#)
- [Immunohistochemistry](#)
- [Immunofluorescence](#)
- [Immunoprecipitation](#)
- [Flow Cytometry](#)
- [Cell Culture](#)

**Cytokeratin 6 Antibody - Images**

Western blot analysis of Cytokeratin 6 expression in A431 cell lysate.