

**DKK1 Antibody**  
Rabbit mAb  
Catalog # AP90718

## Specification

---

### DKK1 Antibody - Product Information

Application	WB, IHC, FC, ICC
Primary Accession	<a href="#">O94907</a>
Reactivity	Rat
Clonality	Monoclonal
<b>Other Names</b>	
SK; DKK-1; Dickkopf-related protein 1; Dickkopf-1; hDkk-1; Dickkopf homolog 1;	
Isotype	Rabbit IgG
Host	Rabbit
Calculated MW	28672 Da

### DKK1 Antibody - Additional Information

Purification	Affinity-chromatography
Immunogen	A synthesized peptide derived from human DKK1
Description	<b>DKK1: dickkopf homolog 1 (Xenopus laevis), also known as SK. Entrez Protein NP_036374. DKK1 is a member of the dickkopf family. It is a secreted protein with two cysteine rich regions and is involved in embryonic development through its inhibition of the WNT signaling pathway. Elevated levels of DKK1 in bone marrow plasma and peripheral blood is associated with the presence of osteolytic bone lesions in patients with multiple myeloma.</b>
Storage Condition and Buffer	<b>Rabbit IgG in phosphate buffered saline , pH 7.4, 150mM NaCl, 0.02% sodium azide and 50% glycerol. Store at +4°C short term. Store at -20°C long term. Avoid freeze / thaw cycle.</b>

### DKK1 Antibody - Protein Information

**Name** DKK1

#### Function

Antagonizes canonical Wnt signaling by inhibiting LRP5/6 interaction with Wnt and by forming a ternary complex with the transmembrane protein KREMEN that promotes internalization of LRP5/6 (PubMed:<a href="http://www.uniprot.org/citations/22000856" target="\_blank">22000856</a>). DKKs play an important role in vertebrate development, where they locally inhibit Wnt regulated

processes such as antero-posterior axial patterning, limb development, somitogenesis and eye formation. In the adult, Dkks are implicated in bone formation and bone disease, cancer and Alzheimer disease (PubMed:<a href="http://www.uniprot.org/citations/17143291" target="\_blank">17143291</a>). Inhibits the pro-apoptotic function of KREMEN1 in a Wnt-independent manner, and has anti-apoptotic activity (By similarity).

#### Cellular Location

Secreted.

#### Tissue Location

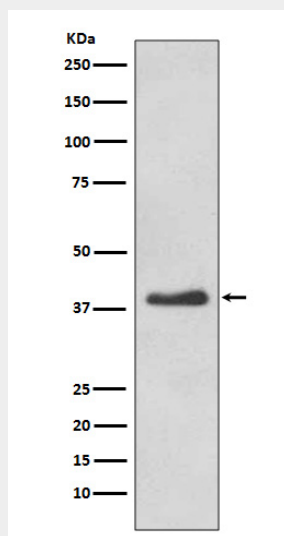
Placenta.

### DKK1 Antibody - Protocols

Provided below are standard protocols that you may find useful for product applications.

- [Western Blot](#)
- [Blocking Peptides](#)
- [Dot Blot](#)
- [Immunohistochemistry](#)
- [Immunofluorescence](#)
- [Immunoprecipitation](#)
- [Flow Cytometry](#)
- [Cell Culture](#)

### DKK1 Antibody - Images



Western blot analysis of DKK1 expression in HeLa cell lysate.