

CD21 Antibody
Rabbit mAb
Catalog # AP90713**Specification**

CD21 Antibody - Product Information

Application	WB, IHC, FC, ICC, IP
Primary Accession	P20023
Clonality	Monoclonal
Other Names	
CR2; C3DR; CD21 antigen; CVID7; Complement receptors type 2; CD21; Complement C3d receptor; EBV receptor; SLEB9; Complement receptor type 2; CR; Epstein-Barr virus receptor;	
Isotype	Rabbit IgG
Host	Rabbit
Calculated MW	112916 Da

CD21 Antibody - Additional Information

Purification	Affinity-chromatography
Immunogen	A synthesized peptide derived from human CD21
Description	Receptor for complement C3Dd, for the Epstein-Barr virus on human B-cells and T-cells and for HNRPU. Participates in B lymphocytes activation. (Microbial infection) Acts as a receptor for Epstein-Barr virus.
Storage Condition and Buffer	Rabbit IgG in phosphate buffered saline , pH 7.4, 150mM NaCl, 0.02% sodium azide and 50% glycerol. Store at +4°C short term. Store at -20°C long term. Avoid freeze / thaw cycle.

CD21 Antibody - Protein Information**Name** CR2**Synonyms** C3DR**Function**

Serves as a receptor for various ligands including complement component CD3d, HNRNPU OR IFNA1 (PubMed:1849076, PubMed:21527715, PubMed:7753047). When C3d is bound to antigens, attaches to C3d on B- cell surface and thereby facilitates the recognition and uptake of antigens by B-cells (PubMed:21527715). This interaction enhances B-cell activation and subsequent immune responses. Forms a complex with

several partners on the surface of B-cells including CD19, FCRL5 and CD81, to form the B-cell coreceptor complex that plays a crucial role in B-cell activation and signaling (PubMed:1383329, PubMed:30107486). Induces also specific intracellular signaling separately from the BCR and CD19 by activating the tyrosine kinase SRC, which then phosphorylates nucleolin/NCL and triggers AKT and GSK3 kinase activities in a SYK/CD19-independent manner (PubMed:12938232). Acts as a ligand for CD23 (FcεpsilonRII), a low-affinity receptor for IgE, which is expressed on B-cells and other immune cells, and thus participates in the regulation of IgE production (PubMed:1386409).

Cellular Location

Cell membrane; Single-pass type I membrane protein

Tissue Location

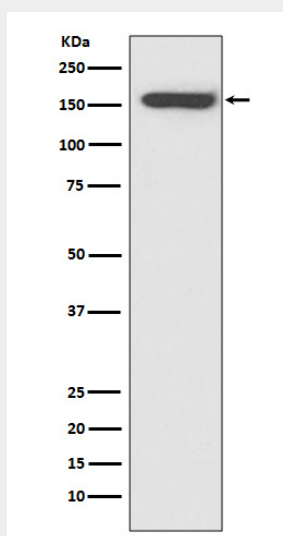
Mature B-lymphocytes, T-lymphocytes, pharyngeal epithelial cells, astrocytes and follicular dendritic cells of the spleen

CD21 Antibody - Protocols

Provided below are standard protocols that you may find useful for product applications.

- [Western Blot](#)
- [Blocking Peptides](#)
- [Dot Blot](#)
- [Immunohistochemistry](#)
- [Immunofluorescence](#)
- [Immunoprecipitation](#)
- [Flow Cytometry](#)
- [Cell Culture](#)

CD21 Antibody - Images



Western blot analysis of CD21 expression in Raji cell lysate.