

**Smac/Diablo Antibody**  
Rabbit mAb  
Catalog # AP90708

## Specification

---

### Smac/Diablo Antibody - Product Information

Application	WB, IHC, FC, ICC, IP
Primary Accession	<a href="#">O9NR28</a>
Reactivity	Rat
Clonality	Monoclonal
<b>Other Names</b>	
SMAC; DFNA64; DIABLO; SMAC3;	
Isotype	Rabbit IgG
Host	Rabbit
Calculated MW	27131 Da

### Smac/Diablo Antibody - Additional Information

Purification	Affinity-chromatography
Immunogen	A synthesized peptide derived from human Smac/Diablo
Description	Smac/Diablo is a 21 kDa mammalian mitochondrial protein that functions as a regulatory component during apoptosis. Upon mitochondrial stress, Smac/Diablo is released from mitochondria and competes with caspases for binding of IAPs (inhibitor of apoptosis proteins). The interaction of Smac/Diablo with IAPs relieves the inhibitory effect of the IAPs on caspases.
Storage Condition and Buffer	Rabbit IgG in phosphate buffered saline , pH 7.4, 150mM NaCl, 0.02% sodium azide and 50% glycerol. Store at +4°C short term. Store at -20°C long term. Avoid freeze / thaw cycle.

### Smac/Diablo Antibody - Protein Information

Name DIABLO ([HGNC:21528](#))

#### Function

Promotes apoptosis by activating caspases in the cytochrome c/Apaf-1/caspase-9 pathway. Acts by opposing the inhibitory activity of inhibitor of apoptosis proteins (IAP). Inhibits the activity of BIRC6/BRUCE by inhibiting its binding to caspases (PubMed:[15200957](http://www.uniprot.org/citations/15200957), PubMed:[36758104](http://www.uniprot.org/citations/36758104), PubMed:[36758105](http://www.uniprot.org/citations/36758105), PubMed:[36758106](http://www.uniprot.org/citations/36758106)).

**Cellular Location**

Mitochondrion. Cytoplasm, cytosol Note=Released into the cytosol in a PARL-dependent manner when cells undergo apoptosis.

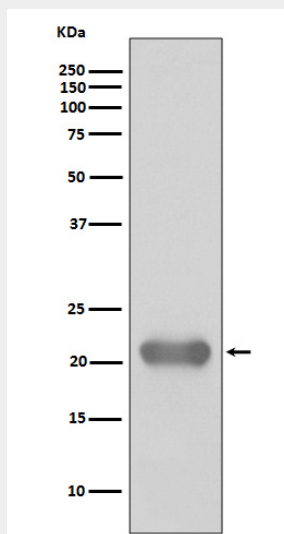
**Tissue Location**

Ubiquitously expressed with highest expression in testis. Expression is also high in heart, liver, kidney, spleen, prostate and ovary. Low in brain, lung, thymus and peripheral blood leukocytes. Isoform 3 is ubiquitously expressed

**Smac/Diablo Antibody - Protocols**

Provided below are standard protocols that you may find useful for product applications.

- [Western Blot](#)
- [Blocking Peptides](#)
- [Dot Blot](#)
- [Immunohistochemistry](#)
- [Immunofluorescence](#)
- [Immunoprecipitation](#)
- [Flow Cytometry](#)
- [Cell Culture](#)

**Smac/Diablo Antibody - Images**

Western blot analysis of Smac/Diablo expression in Jurkat cell lysate.