

CPT2 Antibody
Rabbit mAb
Catalog # AP90702

Specification

CPT2 Antibody - Product Information

Application	WB, IHC, ICC
Primary Accession	P23786
Reactivity	Rat
Clonality	Monoclonal
Other Names	
CPT1; CPT2; IIAE4; CPTASE;	
Isotype	Rabbit IgG
Host	Rabbit
Calculated MW	73777 Da

CPT2 Antibody - Additional Information

Purification	Affinity-chromatography
Immunogen	A synthesized peptide derived from human CPT2
Description	The protein encoded by this gene is a nuclear protein which is transported to the mitochondrial inner membrane. Together with carnitine palmitoyltransferase I, the encoded protein oxidizes long-chain fatty acids in the mitochondria. Defects in this gene are associated with mitochondrial long-chain fatty-acid (LCFA) oxidation disorders.
Storage Condition and Buffer	Rabbit IgG in phosphate buffered saline , pH 7.4, 150mM NaCl, 0.02% sodium azide and 50% glycerol. Store at +4°C short term. Store at -20°C long term. Avoid freeze / thaw cycle.

CPT2 Antibody - Protein Information

Name CPT2 ([HGNC:2330](#))

Synonyms CPT1

Function

Involved in the intramitochondrial synthesis of acylcarnitines from accumulated acyl-CoA metabolites (PubMed: <http://www.uniprot.org/citations/20538056> target="_blank">20538056, PubMed: <http://www.uniprot.org/citations/24780397> target="_blank">24780397). Reconverts acylcarnitines back into the respective acyl-CoA esters that can then undergo beta-oxidation, an essential step for the mitochondrial uptake of

long-chain fatty acids and their subsequent beta-oxidation in the mitochondrion. Active with medium (C8- C12) and long-chain (C14-C18) acyl-CoA esters (PubMed:20538056).

Cellular Location

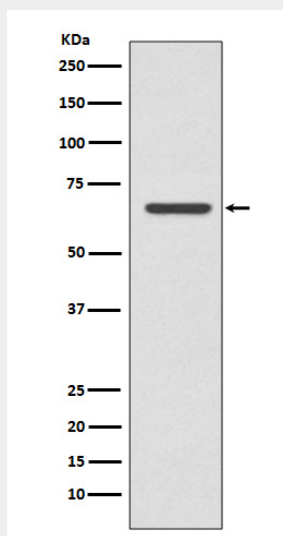
Mitochondrion inner membrane; Peripheral membrane protein; Matrix side

CPT2 Antibody - Protocols

Provided below are standard protocols that you may find useful for product applications.

- [Western Blot](#)
- [Blocking Peptides](#)
- [Dot Blot](#)
- [Immunohistochemistry](#)
- [Immunofluorescence](#)
- [Immunoprecipitation](#)
- [Flow Cytometry](#)
- [Cell Culture](#)

CPT2 Antibody - Images



Western blot analysis of CPT2 expression in MCF-7 cell lysate.