

Annexin A10 Antibody
Rabbit mAb
Catalog # AP90696

Specification

Annexin A10 Antibody - Product Information

Application	WB
Primary Accession	O9UJ72
Reactivity	Rat
Clonality	Monoclonal

Other Names

annexin 14; annexin A10; annexin-14; ANX10; ANX14;

Isotype	Rabbit IgG
Host	Rabbit
Calculated MW	37278 Da

Annexin A10 Antibody - Additional Information

Purification	Affinity-chromatography
Immunogen	A synthesized peptide derived from human Annexin A10
Description	Belongs to the annexin family. Contains 4 annexin repeats.
Storage Condition and Buffer	Rabbit IgG in phosphate buffered saline , pH 7.4, 150mM NaCl, 0.02% sodium azide and 50% glycerol. Store at +4°C short term. Store at -20°C long term. Avoid freeze / thaw cycle.

Annexin A10 Antibody - Protein Information

Name ANXA10

Synonyms ANX14

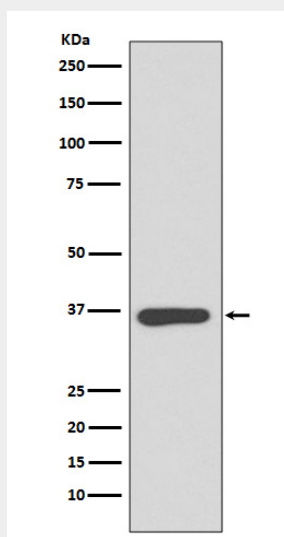
Annexin A10 Antibody - Protocols

Provided below are standard protocols that you may find useful for product applications.

- [Western Blot](#)
- [Blocking Peptides](#)
- [Dot Blot](#)
- [Immunohistochemistry](#)
- [Immunofluorescence](#)
- [Immunoprecipitation](#)
- [Flow Cytometry](#)

- [Cell Culture](#)

Annexin A10 Antibody - Images



Western blot analysis of Annexin A10 expression in HeLa cell lysate.