

BPI Antibody
Rabbit mAb
Catalog # AP90695

Specification

BPI Antibody - Product Information

Application	WB, FC, ICC
Primary Accession	P17213
Clonality	Monoclonal
Other Names	
rBPI; BPIFD1; CAP 57; BPI; Bactericidal permeability-increasing protein;	
Isotype	Rabbit IgG
Host	Rabbit
Calculated MW	53900 Da

BPI Antibody - Additional Information

Purification	Affinity-chromatography
Immunogen	A synthesized peptide derived from human BPI
Description	The cytotoxic action of BPI is limited to many species of Gram-negative bacteria; this specificity may be explained by a strong affinity of the very basic N-terminal half for the negatively charged lipopolysaccharides that are unique to the Gram-negative bacterial outer envelope. Has antibacterial activity against the Gram-negative bacterium <i>P.aeruginosa</i> , this activity is inhibited by LPS from <i>P.aeruginosa</i> .
Storage Condition and Buffer	Rabbit IgG in phosphate buffered saline , pH 7.4, 150mM NaCl, 0.02% sodium azide and 50% glycerol. Store at +4°C short term. Store at -20°C long term. Avoid freeze / thaw cycle.

BPI Antibody - Protein Information

Name BPI

Function

The cytotoxic action of BPI is limited to many species of Gram-negative bacteria; this specificity may be explained by a strong affinity of the very basic N-terminal half for the negatively charged lipopolysaccharides that are unique to the Gram-negative bacterial outer envelope. Has antibacterial activity against the Gram-negative bacterium *P.aeruginosa*, this activity is inhibited by LPS from *P.aeruginosa*.

Cellular Location

Secreted. Cytoplasmic granule membrane Note=Membrane-associated in polymorphonuclear Leukocytes (PMN) granules.

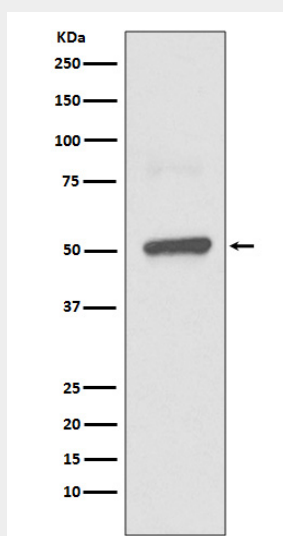
Tissue Location

Restricted to cells of the myeloid series.

BPI Antibody - Protocols

Provided below are standard protocols that you may find useful for product applications.

- [Western Blot](#)
- [Blocking Peptides](#)
- [Dot Blot](#)
- [Immunohistochemistry](#)
- [Immunofluorescence](#)
- [Immunoprecipitation](#)
- [Flow Cytometry](#)
- [Cell Culture](#)

BPI Antibody - Images

Western blot analysis of BPI expression in THP1 lysate.