

Cytokeratin 14 Antibody
Rabbit mAb
Catalog # AP90686

Specification

Cytokeratin 14 Antibody - Product Information

| | |
|-------------------|------------------------|
| Application | WB, IHC, ICC |
| Primary Accession | P02533 |
| Reactivity | Rat |
| Clonality | Monoclonal |

Other Names

CK-14; CK14; cytokeratin 14; Cytokeratin-14; EBS3; EBS4; K14; K1C14; keratin 14; Keratin, type I cytoskeletal 14; Keratin-14; KRT14; NFJ;

| | |
|---------------|------------|
| Isotype | Rabbit IgG |
| Host | Rabbit |
| Calculated MW | 51561 Da |

Cytokeratin 14 Antibody - Additional Information

| | |
|------------------------------|--|
| Purification | Affinity-chromatography |
| Immunogen | A synthesized peptide derived from human Cytokeratin 14 |
| Description | K14 a type I cytoskeletal keratin. The keratins are intermediate filament proteins responsible for the structural integrity of epithelial cells and are subdivided into cytokeratins and hair keratins. There are two types of cytoskeletal and microfibrillar keratin: type I (acidic; 40-55 kDa) [K9 to K20] and type II (neutral to basic; 56-70 kDa) [K1 to K8]. Both a basic and an acidic keratin are required for filament assembly. |
| Storage Condition and Buffer | Rabbit IgG in phosphate buffered saline , pH 7.4, 150mM NaCl, 0.02% sodium azide and 50% glycerol. Store at +4°C short term. Store at -20°C long term. Avoid freeze / thaw cycle. |

Cytokeratin 14 Antibody - Protein Information

Name KRT14

Function

The nonhelical tail domain is involved in promoting KRT5- KRT14 filaments to self-organize into large bundles and enhances the mechanical properties involved in resilience of keratin intermediate filaments in vitro.

Cellular Location

Cytoplasm. Nucleus. Note=Expressed in both as a filamentous pattern.

Tissue Location

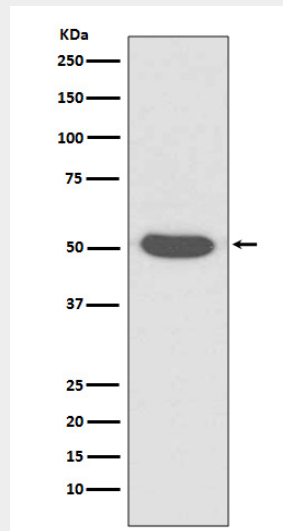
Expressed in the corneal epithelium (at protein level) (PubMed:26758872). Detected in the basal layer, lowered within the more apically located layers specifically in the stratum spinosum, stratum granulosum but is not detected in stratum corneum. Strongly expressed in the outer root sheath of anagen follicles but not in the germinative matrix, inner root sheath or hair (PubMed:9457912). Found in keratinocytes surrounding the club hair during telogen (PubMed:9457912).

Cytokeratin 14 Antibody - Protocols

Provided below are standard protocols that you may find useful for product applications.

- [Western Blot](#)
- [Blocking Peptides](#)
- [Dot Blot](#)
- [Immunohistochemistry](#)
- [Immunofluorescence](#)
- [Immunoprecipitation](#)
- [Flow Cytometry](#)
- [Cell Culture](#)

Cytokeratin 14 Antibody - Images



Western blot analysis of Cytokeratin 14 expression in A431 cell lysate.