

cleaved Caspase-9 Antibody
Rabbit mAb
Catalog # AP90685**Specification**

cleaved Caspase-9 Antibody - Product Information

Application	WB, IP
Primary Accession	P55211
Clonality	Monoclonal
Other Names	
MCH6; APAF3; APAF-3; PPP1R56; ICE-LAP6; CASP9; Caspase-9; Caspase 9 Dominant Negative;	
Isotype	Rabbit IgG
Host	Rabbit
Calculated MW	46281 Da

cleaved Caspase-9 Antibody - Additional Information

Purification	Affinity-chromatography
Immunogen	A synthesized peptide derived from human cleaved Caspase-9
Description	Involved in the activation cascade of caspases responsible for apoptosis execution. Binding of caspase-9 to Apaf-1 leads to activation of the protease which then cleaves and activates caspase-3. Promotes DNA damage-induced apoptosis in a ABL1/c-Abl-dependent manner. Proteolytically cleaves poly(ADP-ribose) polymerase (PARP). Isoform 2 lacks activity is a dominant-negative inhibitor of caspase-9.
Storage Condition and Buffer	Rabbit IgG in phosphate buffered saline , pH 7.4, 150mM NaCl, 0.02% sodium azide and 50% glycerol. Store at +4°C short term. Store at -20°C long term. Avoid freeze / thaw cycle.

cleaved Caspase-9 Antibody - Protein Information**Name** CASP9**Synonyms** MCH6**Function**

Involved in the activation cascade of caspases responsible for apoptosis execution. Binding of caspase-9 to Apaf-1 leads to activation of the protease which then cleaves and activates effector caspases caspase-3 (CASP3) or caspase-7 (CASP7). Promotes DNA damage- induced apoptosis in a ABL1/c-Abl-dependent manner. Proteolytically cleaves poly(ADP-ribose) polymerase (PARP).

Cleaves BIRC6 following inhibition of BIRC6-caspase binding by DIABLO/SMAC (PubMed:36758105, PubMed:36758106).

Tissue Location

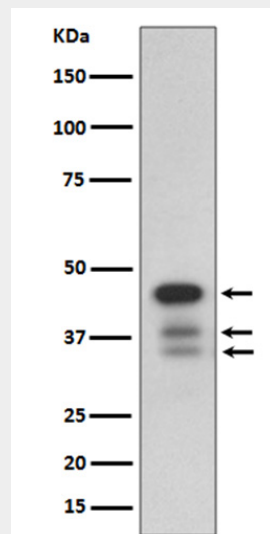
Ubiquitous, with highest expression in the heart, moderate expression in liver, skeletal muscle, and pancreas. Low levels in all other tissues. Within the heart, specifically expressed in myocytes.

cleaved Caspase-9 Antibody - Protocols

Provided below are standard protocols that you may find useful for product applications.

- [Western Blot](#)
- [Blocking Peptides](#)
- [Dot Blot](#)
- [Immunohistochemistry](#)
- [Immunofluorescence](#)
- [Immunoprecipitation](#)
- [Flow Cytometry](#)
- [Cell Culture](#)

cleaved Caspase-9 Antibody - Images



Western blot analysis of cleaved Caspase-9 Antibody expression in HeLa cell lysate treated with staurosporine.