

P Glycoprotein Antibody
Rabbit mAb
Catalog # AP90672

Specification

P Glycoprotein Antibody - Product Information

Application	WB, IHC
Primary Accession	P08183
Reactivity	Rat
Clonality	Monoclonal
Other Names	
CD243; MDR1; MDR3; Multidrug resistance protein 1; P-glycoprotein 1; PGY1;	
Isotype	Rabbit IgG
Host	Rabbit
Calculated MW	141479 Da

P Glycoprotein Antibody - Additional Information

Purification	Affinity-chromatography
Immunogen	A synthesized peptide derived from human P Glycoprotein
Description	A chronic, relapsing inflammation of the gastrointestinal tract with a complex etiology. It is subdivided into Crohn disease and ulcerative colitis phenotypes. Crohn disease may affect any part of the gastrointestinal tract from the mouth to the anus, but most frequently it involves the terminal ileum and colon.
Storage Condition and Buffer	Rabbit IgG in phosphate buffered saline , pH 7.4, 150mM NaCl, 0.02% sodium azide and 50% glycerol. Store at +4°C short term. Store at -20°C long term. Avoid freeze / thaw cycle.

P Glycoprotein Antibody - Protein Information

Name ABCB1 ([HGNC:40](#))

Synonyms MDR1, PGY1

Function

Translocates drugs and phospholipids across the membrane (PubMed:2897240, PubMed:35970996, PubMed:8898203, PubMed:9038218). Catalyzes the flop of phospholipids from the cytoplasmic to the exoplasmic leaflet of the apical membrane.

Participates mainly to the flop of phosphatidylcholine, phosphatidylethanolamine, beta-D-glucosylceramides and sphingomyelins (PubMed:8898203). Energy-dependent efflux pump responsible for decreased drug accumulation in multidrug-resistant cells (PubMed:2897240, PubMed:35970996, PubMed:9038218).

Cellular Location

Cell membrane; Multi-pass membrane protein {ECO:0000255|PROSITE-ProRule:PRU00441} Apical cell membrane. Cytoplasm Note=ABCB1 localization is influenced by C1orf115 expression levels (plasma membrane versus cytoplasm). Localized to the apical membrane of enterocytes (PubMed:28408210).

Tissue Location

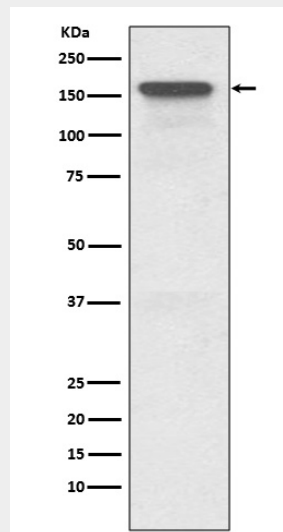
Expressed in small intestine (PubMed:28408210). Expressed in liver, kidney and brain.

P Glycoprotein Antibody - Protocols

Provided below are standard protocols that you may find useful for product applications.

- [Western Blot](#)
- [Blocking Peptides](#)
- [Dot Blot](#)
- [Immunohistochemistry](#)
- [Immunofluorescence](#)
- [Immunoprecipitation](#)
- [Flow Cytometry](#)
- [Cell Culture](#)

P Glycoprotein Antibody - Images



Western blot analysis of P Glycoprotein expression in HeLa cell lysate.