

Hes1 Antibody
Rabbit mAb
Catalog # AP90652

Specification

Hes1 Antibody - Product Information

| | |
|---|------------------------|
| Application | WB, IHC, FC, ICC |
| Primary Accession | Q14469 |
| Reactivity | Rat |
| Clonality | Monoclonal |
| Other Names | |
| HES1; BHLHb39; HHL; HL; Hairy and enhancer of split 1; Hairy homolog; HRY; Hairy homolog (Drosophila); Transcription factor HES-1; Hairy-like protein; HES-1; | |
| Isotype | Rabbit IgG |
| Host | Rabbit |
| Calculated MW | 29541 Da |

Hes1 Antibody - Additional Information

| | |
|------------------------------|---|
| Purification | Affinity-chromatography |
| Immunogen | A synthesized peptide derived from human Hes1 |
| Description | HES1 (Hairy and Enhancer of Split 1) is one of seven members of the HES family of basic helix-loop-helix (bHLH) transcription factors which function primarily to repress transcription of bHLH-dependent genes. HES1 is understood to play an important conserved role in maintaining pluripotency of embryonic and adult stem/progenitor cells via the transcriptional repression of genes that promote differentiation. |
| Storage Condition and Buffer | Rabbit IgG in phosphate buffered saline , pH 7.4, 150mM NaCl, 0.02% sodium azide and 50% glycerol. Store at +4°C short term. Store at -20°C long term. Avoid freeze / thaw cycle. |

Hes1 Antibody - Protein Information

Name HES1

Synonyms BHLHB39, HL, HRY

Function

Transcriptional repressor of genes that require a bHLH protein for their transcription. May act as a negative regulator of myogenesis by inhibiting the functions of MYOD1 and ASH1. Binds DNA on N-box motifs: 5'-CACNAG-3' with high affinity and on E-box motifs: 5'- CANNTG-3' with low affinity

(By similarity). May play a role in a functional FA core complex response to DNA cross-link damage, being required for the stability and nuclear localization of FA core complex proteins, as well as for FANCD2 monoubiquitination in response to DNA damage.

Cellular Location

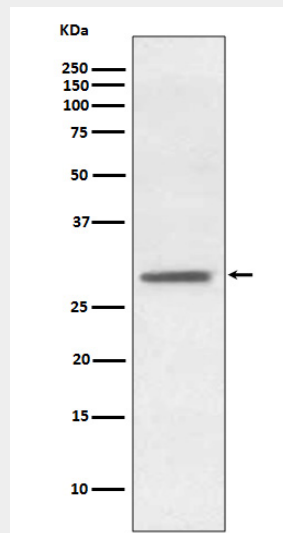
Nucleus.

Hes1 Antibody - Protocols

Provided below are standard protocols that you may find useful for product applications.

- [Western Blot](#)
- [Blocking Peptides](#)
- [Dot Blot](#)
- [Immunohistochemistry](#)
- [Immunofluorescence](#)
- [Immunoprecipitation](#)
- [Flow Cytometry](#)
- [Cell Culture](#)

Hes1 Antibody - Images



Western blot analysis of Hes1 expression in SH-SY5Y cell lysate.