

**p73 Antibody**  
Rabbit mAb  
Catalog # AP90619

## Specification

---

### p73 Antibody - Product Information

Application	WB, IHC, ICC
Primary Accession	<a href="#">O15350</a>
Reactivity	Rat
Clonality	Monoclonal
<b>Other Names</b>	
p53-like transcription factor; p53-related protein; P73 alpha protein; p73-alpha; TP73; TRP73; Tumor protein p73;	
Isotype	Rabbit IgG
Host	Rabbit
Calculated MW	69623 Da

### p73 Antibody - Additional Information

Purification	Affinity-chromatography
Immunogen	A synthesized peptide derived from human p73
Description	p73 IS a protein of the p53 family of proteins. Participates in the apoptotic response to DNA damage. Phosphorylated in a cell cycle-dependent manner and negatively regulated by CDKs. When overproduced, activates transcription from p53-responsive promoters and induces apoptosis. May be a tumor suppressor protein. Seven alternatively-spliced isoforms have been described.
Storage Condition and Buffer	Rabbit IgG in phosphate buffered saline , pH 7.4, 150mM NaCl, 0.02% sodium azide and 50% glycerol. Store at +4°C short term. Store at -20°C long term. Avoid freeze / thaw cycle.

### p73 Antibody - Protein Information

**Name** TP73

**Synonyms** P73

#### Function

Participates in the apoptotic response to DNA damage. Isoforms containing the transactivation domain are pro-apoptotic, isoforms lacking the domain are anti-apoptotic and block the function of p53 and transactivating p73 isoforms. May be a tumor suppressor protein. Is an activator of FOXJ1

expression (By similarity). It is an essential factor for the positive regulation of lung ciliated cell differentiation (PubMed:<a href="http://www.uniprot.org/citations/34077761" target="\_blank">34077761</a>).

#### Cellular Location

Nucleus. Cytoplasm. Note=Accumulates in the nucleus in response to DNA damage

#### Tissue Location

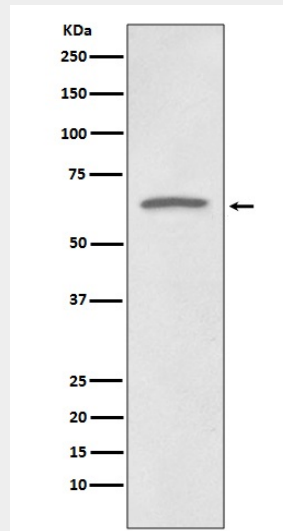
Expressed in striatal neurons of patients with Huntington disease (at protein level). Brain, kidney, placenta, colon, heart, liver, spleen, skeletal muscle, prostate, thymus and pancreas Highly expressed in fetal tissue. Expressed in the respiratory epithelium (PubMed:34077761).

### p73 Antibody - Protocols

Provided below are standard protocols that you may find useful for product applications.

- [Western Blot](#)
- [Blocking Peptides](#)
- [Dot Blot](#)
- [Immunohistochemistry](#)
- [Immunofluorescence](#)
- [Immunoprecipitation](#)
- [Flow Cytometry](#)
- [Cell Culture](#)

### p73 Antibody - Images



Western blot analysis of p73 expression in HeLa cell lysate.