

**Hemoglobin subunit alpha Antibody**  
**Rabbit mAb**  
**Catalog # AP90609**

**Specification**

---

**Hemoglobin subunit alpha Antibody - Product Information**

Application	<b>WB, IHC, FC, IP</b>
Primary Accession	<a href="#">P69905</a>
Reactivity	<b>Rat</b>
Clonality	<b>Monoclonal</b>

**Other Names**

HBA2; Alpha globin; Alpha-2 globin; HBH; Hemoglobin alpha chain; Hemoglobin A1c; Hemoglobin subunit alpha; Hemoglobin alpha 2; Alpha-globin;

Isotype	<b>Rabbit IgG</b>
Host	<b>Rabbit</b>
Calculated MW	<b>15258 Da</b>

**Hemoglobin subunit alpha Antibody - Additional Information**

Purification	<b>Affinity-chromatography</b>
Immunogen	<b>A synthesized peptide derived from human Hemoglobin subunit alpha</b>
Description	<b>Involved in oxygen transport from the lung to the various peripheral tissues.</b>
Storage Condition and Buffer	<b>Rabbit IgG in phosphate buffered saline , pH 7.4, 150mM NaCl, 0.02% sodium azide and 50% glycerol. Store at +4°C short term. Store at -20°C long term. Avoid freeze / thaw cycle.</b>

**Hemoglobin subunit alpha Antibody - Protein Information**

**Name** HBA1

**Function**

Involved in oxygen transport from the lung to the various peripheral tissues.

**Tissue Location**

Red blood cells.

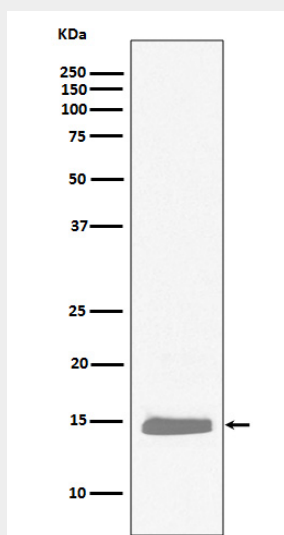
**Hemoglobin subunit alpha Antibody - Protocols**

Provided below are standard protocols that you may find useful for product applications.

- [Western Blot](#)
- [Blocking Peptides](#)

- [Dot Blot](#)
- [Immunohistochemistry](#)
- [Immunofluorescence](#)
- [Immunoprecipitation](#)
- [Flow Cytometry](#)
- [Cell Culture](#)

### Hemoglobin subunit alpha Antibody - Images



Western blot analysis of Hemoglobin subunit alpha expression in K562 cell lysate.