

**Tuberin Antibody**  
Rabbit mAb  
Catalog # AP90604

## Specification

---

### Tuberin Antibody - Product Information

Application	WB, IHC, FC
Primary Accession	<a href="#">P49815</a>
Reactivity	Rat
Clonality	Monoclonal
<b>Other Names</b>	
TSC2; Tuberous sclerosis 2 homolog protein; Tuberous sclerosis 2 protein; Tuberin;	
Isotype	Rabbit IgG
Host	Rabbit
Calculated MW	200608 Da

### Tuberin Antibody - Additional Information

Purification	Affinity-chromatography
Immunogen	A synthesized peptide derived from human Tuberin
Description	Tuberin is a product of the TSC2 tumor suppressor gene and an important regulator of cell proliferation and tumor development. Mutations in either TSC2 or the related TSC1 (hamartin) gene cause tuberous sclerosis complex (TSC), an autosomal dominant disorder characterized by development of multiple, widespread non-malignant tumors. Tuberin is directly phosphorylated at Thr1462 by Akt/PKB. Phosphorylation at Thr1462 and Tyr1571 regulates tuberin-hamartin complexes and tuberin activity.
Storage Condition and Buffer	Rabbit IgG in phosphate buffered saline , pH 7.4, 150mM NaCl, 0.02% sodium azide and 50% glycerol. Store at +4°C short term. Store at -20°C long term. Avoid freeze / thaw cycle.

### Tuberin Antibody - Protein Information

**Name** TSC2 {ECO:0000303|PubMed:7558029, ECO:0000312|HGNC:HGNC:12363}

#### Function

Catalytic component of the TSC-TBC complex, a multiprotein complex that acts as a negative regulator of the canonical mTORC1 complex, an evolutionarily conserved central nutrient sensor that stimulates anabolic reactions and macromolecule biosynthesis to promote cellular biomass

generation and growth (PubMed:<a href="http://www.uniprot.org/citations/12172553" target="\_blank">12172553</a>, PubMed:<a href="http://www.uniprot.org/citations/12271141" target="\_blank">12271141</a>, PubMed:<a href="http://www.uniprot.org/citations/12842888" target="\_blank">12842888</a>, PubMed:<a href="http://www.uniprot.org/citations/12906785" target="\_blank">12906785</a>, PubMed:<a href="http://www.uniprot.org/citations/15340059" target="\_blank">15340059</a>, PubMed:<a href="http://www.uniprot.org/citations/22819219" target="\_blank">22819219</a>, PubMed:<a href="http://www.uniprot.org/citations/24529379" target="\_blank">24529379</a>, PubMed:<a href="http://www.uniprot.org/citations/28215400" target="\_blank">28215400</a>, PubMed:<a href="http://www.uniprot.org/citations/33436626" target="\_blank">33436626</a>, PubMed:<a href="http://www.uniprot.org/citations/35772404" target="\_blank">35772404</a>). Within the TSC-TBC complex, TSC2 acts as a GTPase- activating protein (GAP) for the small GTPase RHEB, a direct activator of the protein kinase activity of mTORC1 (PubMed:<a href="http://www.uniprot.org/citations/12172553" target="\_blank">12172553</a>, PubMed:<a href="http://www.uniprot.org/citations/12820960" target="\_blank">12820960</a>, PubMed:<a href="http://www.uniprot.org/citations/12842888" target="\_blank">12842888</a>, PubMed:<a href="http://www.uniprot.org/citations/12906785" target="\_blank">12906785</a>, PubMed:<a href="http://www.uniprot.org/citations/15340059" target="\_blank">15340059</a>, PubMed:<a href="http://www.uniprot.org/citations/22819219" target="\_blank">22819219</a>, PubMed:<a href="http://www.uniprot.org/citations/24529379" target="\_blank">24529379</a>, PubMed:<a href="http://www.uniprot.org/citations/33436626" target="\_blank">33436626</a>). In absence of nutrients, the TSC-TBC complex inhibits mTORC1, thereby preventing phosphorylation of ribosomal protein S6 kinase (RPS6KB1 and RPS6KB2) and EIF4EBP1 (4E-BP1) by the mTORC1 signaling (PubMed:<a href="http://www.uniprot.org/citations/12172553" target="\_blank">12172553</a>, PubMed:<a href="http://www.uniprot.org/citations/12271141" target="\_blank">12271141</a>, PubMed:<a href="http://www.uniprot.org/citations/12842888" target="\_blank">12842888</a>, PubMed:<a href="http://www.uniprot.org/citations/12906785" target="\_blank">12906785</a>, PubMed:<a href="http://www.uniprot.org/citations/22819219" target="\_blank">22819219</a>, PubMed:<a href="http://www.uniprot.org/citations/24529379" target="\_blank">24529379</a>, PubMed:<a href="http://www.uniprot.org/citations/28215400" target="\_blank">28215400</a>, PubMed:<a href="http://www.uniprot.org/citations/35772404" target="\_blank">35772404</a>). The TSC-TBC complex is inactivated in response to nutrients, relieving inhibition of mTORC1 (PubMed:<a href="http://www.uniprot.org/citations/12172553" target="\_blank">12172553</a>, PubMed:<a href="http://www.uniprot.org/citations/24529379" target="\_blank">24529379</a>). Involved in microtubule-mediated protein transport via its ability to regulate mTORC1 signaling (By similarity). Also stimulates the intrinsic GTPase activity of the Ras- related proteins RAP1A and RAB5 (By similarity).

#### Cellular Location

Lysosome membrane; Peripheral membrane protein. Cytoplasm, cytosol Note=Recruited to lysosomal membranes in a RHEB-dependent process in absence of nutrients (PubMed:24529379). In response to insulin signaling and phosphorylation by PKB/AKT1, the complex dissociates from lysosomal membranes and relocates to the cytosol (PubMed:24529379)

#### Tissue Location

Liver, brain, heart, lymphocytes, fibroblasts, biliary epithelium, pancreas, skeletal muscle, kidney, lung and placenta.

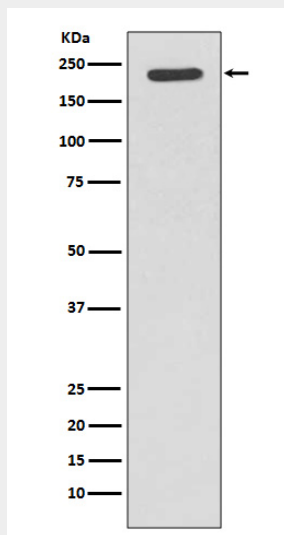
#### Tuberin Antibody - Protocols

Provided below are standard protocols that you may find useful for product applications.

- [Western Blot](#)
- [Blocking Peptides](#)
- [Dot Blot](#)

- [Immunohistochemistry](#)
- [Immunofluorescence](#)
- [Immunoprecipitation](#)
- [Flow Cytometry](#)
- [Cell Culture](#)

### Tuberin Antibody - Images



Western blot analysis of Tuberin expression in Jurkat cell lysate.