

**AQP5 Antibody**  
Rabbit mAb  
Catalog # AP90597

## Specification

---

### AQP5 Antibody - Product Information

Application	WB, IHC, ICC, IP
Primary Accession	<a href="#">P55064</a>
Clonality	Monoclonal
<b>Other Names</b>	
AQP-5; Aquaporin-5; AQP5; Aquaporin 5;	
Isotype	Rabbit IgG
Host	Rabbit
Calculated MW	28292 Da

### AQP5 Antibody - Additional Information

Purification	Affinity-chromatography
Immunogen	A synthesized peptide derived from human AQP5
Description	Forms a water-specific channel. Implicated in the generation of saliva, tears, and pulmonary secretions. Required for TRPV4 activation by hypotonicity (PubMed: <a href="#">16571723</a> ). Together with TRPV4, controls regulatory volume decrease in salivary epithelial cells (PubMed: <a href="#">16571723</a> ).
Storage Condition and Buffer	Rabbit IgG in phosphate buffered saline , pH 7.4, 150mM NaCl, 0.02% sodium azide and 50% glycerol. Store at +4°C short term. Store at -20°C long term. Avoid freeze / thaw cycle.

### AQP5 Antibody - Protein Information

Name AQP5 ([HGNC:638](#))

#### Function

Aquaporins form homotetrameric transmembrane channels, with each monomer independently mediating water transport across the plasma membrane along its osmotic gradient (PubMed:[18768791](http://www.uniprot.org/citations/18768791), PubMed:[8621489](http://www.uniprot.org/citations/8621489)). Plays an important role in fluid secretion in salivary glands (By similarity). Required for TRPV4 activation by hypotonicity. Together with TRPV4, controls regulatory volume decrease in salivary epithelial cells (PubMed:[16571723](http://www.uniprot.org/citations/16571723)). Seems to play a redundant role in water transport in the eye, lung and in sweat glands (By similarity).

### Cellular Location

Apical cell membrane; Multi-pass membrane protein. Cell membrane; Multi-pass membrane protein. Cytoplasmic vesicle membrane; Multi-pass membrane protein Note=Hypotonicity increases location at the cell membrane Phosphorylation decreases location at the cell membrane

### Tissue Location

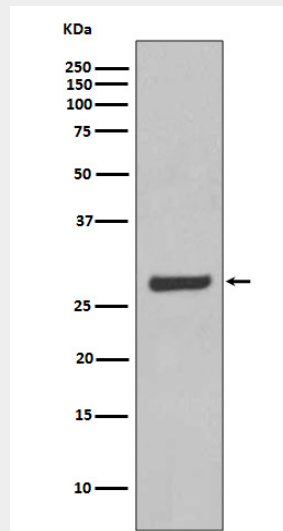
Detected in skin eccrine sweat glands, at the apical cell membrane and at intercellular canaliculi (at protein level).

### AQP5 Antibody - Protocols

Provided below are standard protocols that you may find useful for product applications.

- [Western Blot](#)
- [Blocking Peptides](#)
- [Dot Blot](#)
- [Immunohistochemistry](#)
- [Immunofluorescence](#)
- [Immunoprecipitation](#)
- [Flow Cytometry](#)
- [Cell Culture](#)

### AQP5 Antibody - Images



Western blot analysis of AQP5 expression in SW480 cell lysate.