

MMP8 Antibody
Rabbit mAb
Catalog # AP90591**Specification**

MMP8 Antibody - Product Information

Application	WB, IHC, FC, ICC, IP
Primary Accession	P22894
Reactivity	Rat
Clonality	Monoclonal
Other Names	
HNC; CLG1; MMP-8; PMNL-CL; COLLAGENASE I; NEUTROPHIL; matrix metalloproteinase 8;	
Isotype	Rabbit IgG
Host	Rabbit
Calculated MW	53412 Da

MMP8 Antibody - Additional Information

Purification	Affinity-chromatography
Immunogen	A synthesized peptide derived from human MMP8
Description	Proteins of the matrix metalloproteinase (MMP) family are involved in the breakdown of extracellular matrix in normal physiological processes, such as embryonic development, reproduction, and tissue remodeling, as well as in disease processes, such as arthritis and metastasis. Most MMP's are secreted as inactive proproteins which are activated when cleaved by extracellular proteinases. However, the enzyme encoded by this gene is stored in secondary granules within neutrophils and is activated by autolytic cleavage. Its function is degradation of type I, II and III collagens. The gene is part of a cluster of MMP genes which localize to chromosome 11q22.3.
Storage Condition and Buffer	Rabbit IgG in phosphate buffered saline , pH 7.4, 150mM NaCl, 0.02% sodium azide and 50% glycerol. Store at +4°C short term. Store at -20°C long term. Avoid freeze / thaw cycle.

MMP8 Antibody - Protein Information**Name** MMP8

Synonyms CLG1**Function**

Can degrade fibrillar type I, II, and III collagens.

Cellular Location

Cytoplasmic granule. Secreted, extracellular space, extracellular matrix. Note=Stored in intracellular granules

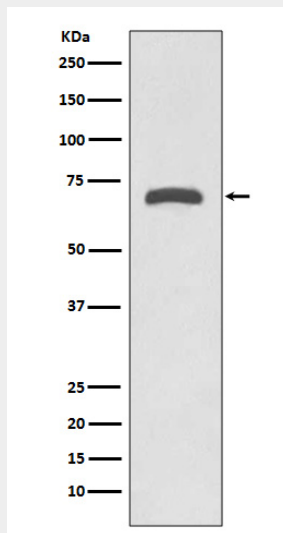
Tissue Location

Neutrophils.

MMP8 Antibody - Protocols

Provided below are standard protocols that you may find useful for product applications.

- [Western Blot](#)
- [Blocking Peptides](#)
- [Dot Blot](#)
- [Immunohistochemistry](#)
- [Immunofluorescence](#)
- [Immunoprecipitation](#)
- [Flow Cytometry](#)
- [Cell Culture](#)

MMP8 Antibody - Images

Western blot analysis of MMP8 expression in Human placenta lysate.