

HTRA2 Antibody
Rabbit mAb
Catalog # AP90588

Specification

HTRA2 Antibody - Product Information

Application	WB, IHC, IP
Primary Accession	O43464
Reactivity	Rat
Clonality	Monoclonal

Other Names

HTRA2; HtrA-like serine protease; OMI; PARK13; Protease; PRSS25; Serine protease 25; HtrA serine peptidase 2; Serine proteinase OMI;

Isotype	Rabbit IgG
Host	Rabbit
Calculated MW	48841 Da

HTRA2 Antibody - Additional Information

Purification	Affinity-chromatography
Immunogen	A synthesized peptide derived from human HTRA2
Description	High temperature requirement protein A2 (HtrA2)/Omi is a serine protease with homology to the E. coli HtrA protein (DegP) and is thought to be involved in apoptosis and stress-induced degradation of misfolded proteins. While HtrA2 was originally identified to be present in either the nucleus or endoplasmic reticulum, subsequent studies have shown that it localizes in mitochondria and is released during apoptosis.
Storage Condition and Buffer	Rabbit IgG in phosphate buffered saline , pH 7.4, 150mM NaCl, 0.02% sodium azide and 50% glycerol. Store at +4°C short term. Store at -20°C long term. Avoid freeze / thaw cycle.

HTRA2 Antibody - Protein Information

Name HTRA2

Synonyms OMI, PRSS25

Function

Serine protease that shows proteolytic activity against a non-specific substrate beta-casein. Promotes or induces cell death either by direct binding to and inhibition of BIRC proteins (also

called inhibitor of apoptosis proteins, IAPs), leading to an increase in caspase activity, or by a BIRC inhibition-independent, caspase- independent and serine protease activity-dependent mechanism. Cleaves THAP5 and promotes its degradation during apoptosis. Isoform 2 seems to be proteolytically inactive.

Cellular Location

Mitochondrion intermembrane space. Mitochondrion membrane; Single-pass membrane protein
Note=Predominantly present in the intermembrane space. Released into the cytosol following apoptotic stimuli, such as UV treatment, and stimulation of mitochondria with caspase-8 truncated BID/tBID

Tissue Location

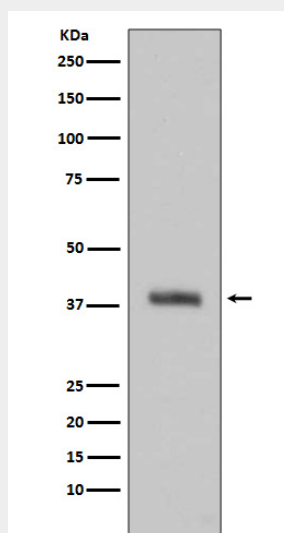
[Isoform 1]: Ubiquitously expressed.

HTRA2 Antibody - Protocols

Provided below are standard protocols that you may find useful for product applications.

- [Western Blot](#)
- [Blocking Peptides](#)
- [Dot Blot](#)
- [Immunohistochemistry](#)
- [Immunofluorescence](#)
- [Immunoprecipitation](#)
- [Flow Cytometry](#)
- [Cell Culture](#)

HTRA2 Antibody - Images



Western blot analysis of HTRA2 expression in Jurkat cell lysate.