

Cytokeratin 10 Antibody
Rabbit mAb
Catalog # AP90586**Specification**

Cytokeratin 10 Antibody - Product Information

| | |
|---|------------------------|
| Application | WB, IHC, ICC |
| Primary Accession | P13645 |
| Reactivity | Rat |
| Clonality | Monoclonal |
| Other Names | |
| CK-10; CK10; cytokeratin 10; Cytokeratin-10; K10; K1C10; keratin 10; Keratin, type I cytoskeletal 10; Keratin-10; KPP; KRT10; | |
| Isotype | Rabbit IgG |
| Host | Rabbit |
| Calculated MW | 58827 Da |

Cytokeratin 10 Antibody - Additional Information

| | |
|------------------------------|---|
| Purification | Affinity-chromatography |
| Immunogen | A synthesized peptide derived from human Cytokeratin 10 |
| Description | K10 a type I cytoskeletal keratin. The keratins are intermediate filament proteins responsible for the structural integrity of epithelial cells and are subdivided into cytokeratins and hair keratins. There are two types of cytoskeletal and microfibrillar keratin: type I (acidic; 40-55 kDa) [K9 to K20] and type II (neutral to basic; 56-70 kDa) [K1 to K8]. Both a basic and an acidic keratin are required for filament assembly. |
| Storage Condition and Buffer | Rabbit IgG in phosphate buffered saline , pH 7.4, 150mM NaCl, 0.02% sodium azide and 50% glycerol. Store at +4°C short term. Store at -20°C long term. Avoid freeze / thaw cycle. |

Cytokeratin 10 Antibody - Protein Information

Name KRT10

Synonyms KPP

Function

Plays a role in the establishment of the epidermal barrier on plantar skin (By similarity). Involved in the maintenance of cell layer development and keratin filament bundles in suprabasal cells of the epithelium (By similarity).

Cellular Location

Secreted, extracellular space. Cell surface. Cytoplasm

Tissue Location

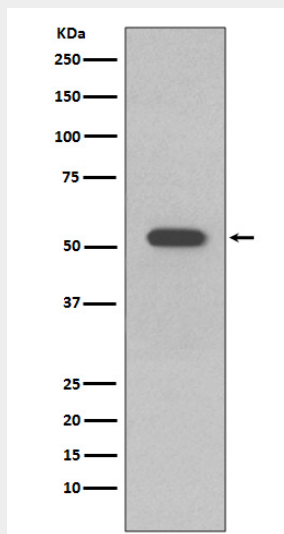
Seen in all suprabasal cell layers including stratum corneum. Expressed on the surface of lung cell lines (PubMed:19627498). Localized on the surface of desquamated nasal epithelial cells (at protein level) (PubMed:12427098)

Cytokeratin 10 Antibody - Protocols

Provided below are standard protocols that you may find useful for product applications.

- [Western Blot](#)
- [Blocking Peptides](#)
- [Dot Blot](#)
- [Immunohistochemistry](#)
- [Immunofluorescence](#)
- [Immunoprecipitation](#)
- [Flow Cytometry](#)
- [Cell Culture](#)

Cytokeratin 10 Antibody - Images



Western blot analysis of Cytokeratin 10 expression in A431 cell lysate.