

Cytokeratin 16 Antibody
Rabbit mAb
Catalog # AP90571

Specification

Cytokeratin 16 Antibody - Product Information

Application **WB, IHC, FC, ICC**

Primary Accession [P08779](#)

Clonality **Monoclonal**

Other Names

CK-16; CK16; cytokeratin 16; Cytokeratin-16; FNEPPK; K16; K1C16; K1CP; keratin 16; Keratin-16; KRT16; KRT16A; NEPPK;

Isotype **Rabbit IgG**

Host **Rabbit**

Calculated MW **51268 Da**

Cytokeratin 16 Antibody - Additional Information

Purification **Affinity-chromatography**

Immunogen **A synthesized peptide derived from human Cytokeratin 16**

Description **K16 a type I cytoskeletal keratin. The keratins are intermediate filament proteins responsible for the structural integrity of epithelial cells and are subdivided into cytokeratins and hair keratins. There are two types of cytoskeletal and microfibrillar keratin: type I (acidic; 40-55 kDa) [K9 to K20] and type II (neutral to basic; 56-70 kDa) [K1 to K8].**

Storage Condition and Buffer **Rabbit IgG in phosphate buffered saline , pH 7.4, 150mM NaCl, 0.02% sodium azide and 50% glycerol. Store at +4°C short term. Store at -20°C long term. Avoid freeze / thaw cycle.**

Cytokeratin 16 Antibody - Protein Information

Name **KRT16**

Synonyms **KRT16A**

Function

Epidermis-specific type I keratin that plays a key role in skin. Acts as a regulator of innate immunity in response to skin barrier breach: required for some inflammatory checkpoint for the skin barrier maintenance.

Tissue Location

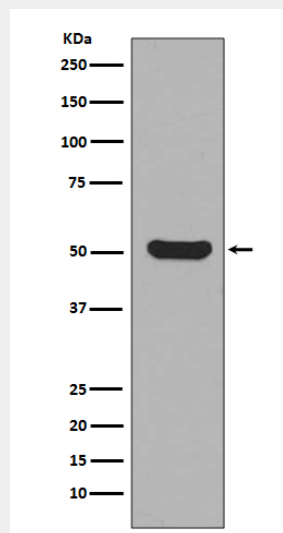
Expressed in the corneal epithelium (at protein level).

Cytokeratin 16 Antibody - Protocols

Provided below are standard protocols that you may find useful for product applications.

- [Western Blot](#)
- [Blocking Peptides](#)
- [Dot Blot](#)
- [Immunohistochemistry](#)
- [Immunofluorescence](#)
- [Immunoprecipitation](#)
- [Flow Cytometry](#)
- [Cell Culture](#)

Cytokeratin 16 Antibody - Images



Western blot analysis of Cytokeratin 16 expression in HaCat cell lysate.