

**Lamin B Receptor Antibody**  
Rabbit mAb  
Catalog # AP90568**Specification**

---

**Lamin B Receptor Antibody - Product Information**

|                                   |                        |
|-----------------------------------|------------------------|
| Application                       | WB, IHC, ICC, IP       |
| Primary Accession                 | <a href="#">Q14739</a> |
| Reactivity                        | Rat                    |
| Clonality                         | Monoclonal             |
| <b>Other Names</b>                |                        |
| PHA; LMN2R; TDRD18; DHCR14B; LBR; |                        |
| Isotype                           | Rabbit IgG             |
| Host                              | Rabbit                 |
| Calculated MW                     | 70703 Da               |

**Lamin B Receptor Antibody - Additional Information**

|                              |   |
|------------------------------|---|
| Purification                 | <b>Affinity-chromatography</b>  |
| Immunogen                    | <b>A synthesized peptide derived from human Lamin B Receptor</b>  |
| Description                  | <b>The protein encoded by this gene belongs to the ERG4/ERG24 family. It localized in the nuclear envelope inner membrane and anchors the lamina and the heterochromatin to the membrane. It may mediate interaction between chromatin and lamin B. Mutations of this gene has been associated with autosomal recessive HEM/Greenberg skeletal dysplasia. Alternative splicing occurs at this locus and two transcript variants encoding the same protein have been identified.</b> |
| Storage Condition and Buffer | <b>Rabbit IgG in phosphate buffered saline , pH 7.4, 150mM NaCl, 0.02% sodium azide and 50% glycerol. Store at +4°C short term. Store at -20°C long term. Avoid freeze / thaw cycle.</b>  |

**Lamin B Receptor Antibody - Protein Information****Name** LBR**Function**

Catalyzes the reduction of the C14-unsaturated bond of lanosterol, as part of the metabolic pathway leading to cholesterol biosynthesis (PubMed:<a href="http://www.uniprot.org/citations/12618959" target="\_blank">12618959</a>, PubMed:<a href="http://www.uniprot.org/citations/16784888" target="\_blank">16784888</a>, PubMed:<a

[21327084](http://www.uniprot.org/citations/21327084), PubMed:[27336722](http://www.uniprot.org/citations/27336722), PubMed:[9630650](http://www.uniprot.org/citations/9630650)). Plays a critical role in myeloid cell cholesterol biosynthesis which is essential to both myeloid cell growth and functional maturation (By similarity). Mediates the activation of NADPH oxidases, perhaps by maintaining critical levels of cholesterol required for membrane lipid raft formation during neutrophil differentiation (By similarity). Anchors the lamina and the heterochromatin to the inner nuclear membrane (PubMed:[10828963](http://www.uniprot.org/citations/10828963)).

#### Cellular Location

Nucleus inner membrane; Multi-pass membrane protein. Endoplasmic reticulum membrane. Cytoplasm Nucleus. Note=Nucleus; nuclear rim

#### Tissue Location

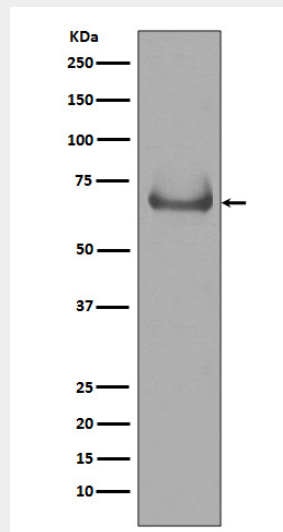
Expressed in the bone marrow, liver, heart, adrenal gland, lung, placenta and uterus (PubMed:16784888). Expressed in osteoclasts and osteoblast-like cells (PubMed:21327084)

### Lamin B Receptor Antibody - Protocols

Provided below are standard protocols that you may find useful for product applications.

- [Western Blot](#)
- [Blocking Peptides](#)
- [Dot Blot](#)
- [Immunohistochemistry](#)
- [Immunofluorescence](#)
- [Immunoprecipitation](#)
- [Flow Cytometry](#)
- [Cell Culture](#)

### Lamin B Receptor Antibody - Images



Western blot analysis of Lamin B Receptor expression in Jurkat cell lysate.