

CCR3 Antibody
Rabbit mAb
Catalog # AP90562

Specification

CCR3 Antibody - Product Information

Application	WB, IHC, ICC
Primary Accession	P51677
Reactivity	Rat
Clonality	Monoclonal
Other Names	
CCR3; CD193; CCCKR3; CMKBR3; CKR3; CMKBR1L2; C-C chemokine receptor type 3;	
Isotype	Rabbit IgG
Host	Rabbit
Calculated MW	41044 Da

CCR3 Antibody - Additional Information

Purification	Affinity-chromatography
Immunogen	A synthesized peptide derived from human CCR3
Description	Receptor for a C-C type chemokine. Binds to eotaxin, eotaxin-3, MCP-3, MCP-4, RANTES and MIP-1 delta. Subsequently transduces a signal by increasing the intracellular calcium ions level. Alternative coreceptor with CD4 for HIV-1 infection.
Storage Condition and Buffer	Rabbit IgG in phosphate buffered saline , pH 7.4, 150mM NaCl, 0.02% sodium azide and 50% glycerol. Store at +4°C short term. Store at -20°C long term. Avoid freeze / thaw cycle.

CCR3 Antibody - Protein Information

Name CCR3

Synonyms CMKBR3

Function

Receptor for C-C type chemokine. Binds and responds to a variety of chemokines, including CCL11, CCL26, CCL7, CCL13, RANTES(CCL5) and CCL15 (PubMed:[7622448](http://www.uniprot.org/citations/7622448), PubMed:[8642344](http://www.uniprot.org/citations/8642344), PubMed:[8676064](http://www.uniprot.org/citations/8676064)). Subsequently transduces a signal by increasing the intracellular calcium ions level (PubMed:[8676064](http://www.uniprot.org/citations/8676064)). In addition acts as a possible functional receptor for NARS1 (PubMed:[8676064](http://www.uniprot.org/citations/8676064)).

href="http://www.uniprot.org/citations/30171954" target="_blank">30171954).

Cellular Location

Cell membrane; Multi-pass membrane protein

Tissue Location

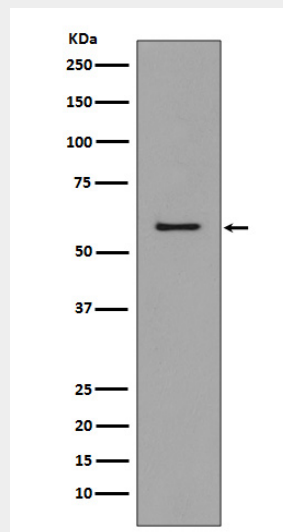
In eosinophils as well as trace amounts in neutrophils and monocytes.

CCR3 Antibody - Protocols

Provided below are standard protocols that you may find useful for product applications.

- [Western Blot](#)
- [Blocking Peptides](#)
- [Dot Blot](#)
- [Immunohistochemistry](#)
- [Immunofluorescence](#)
- [Immunoprecipitation](#)
- [Flow Cytometry](#)
- [Cell Culture](#)

CCR3 Antibody - Images



Western blot analysis of CCR3 expression in K562 cell lysate.