

Lysozyme Antibody
Rabbit mAb
Catalog # AP90547

Specification

Lysozyme Antibody - Product Information

Application	WB, IHC, ICC, IP
Primary Accession	P61626
Clonality	Monoclonal
Other Names	
LYZ; LZM; LYSC; EC 3.2.1.17; 4-beta-N-acetylmuramidase C;	
Isotype	Rabbit IgG
Host	Rabbit
Calculated MW	16537 Da

Lysozyme Antibody - Additional Information

Purification	Affinity-chromatography
Immunogen	A synthesized peptide derived from human Lysozyme
Description	Lysozymes have primarily a bacteriolytic function; those in tissues and body fluids are associated with the monocyte-macrophage system and enhance the activity of immunoagents.
Storage Condition and Buffer	Rabbit IgG in phosphate buffered saline , pH 7.4, 150mM NaCl, 0.02% sodium azide and 50% glycerol. Store at +4°C short term. Store at -20°C long term. Avoid freeze / thaw cycle.

Lysozyme Antibody - Protein Information

Name LYZ

Synonyms LZM

Function

Lysozymes have primarily a bacteriolytic function; those in tissues and body fluids are associated with the monocyte-macrophage system and enhance the activity of immunoagents.

Cellular Location

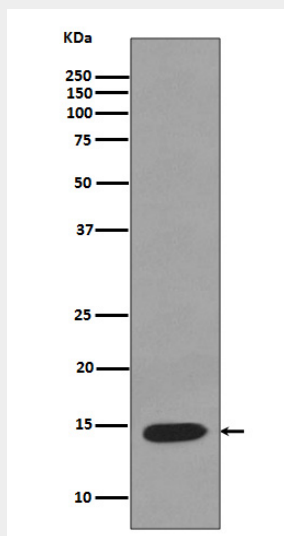
Secreted.

Lysozyme Antibody - Protocols

Provided below are standard protocols that you may find useful for product applications.

- [Western Blot](#)
- [Blocking Peptides](#)
- [Dot Blot](#)
- [Immunohistochemistry](#)
- [Immunofluorescence](#)
- [Immunoprecipitation](#)
- [Flow Cytometry](#)
- [Cell Culture](#)

Lysozyme Antibody - Images



Western blot analysis of Lysozyme expression in K562 cell lysate;