

Alas1 Antibody
Rabbit mAb
Catalog # AP90528

Specification

Alas1 Antibody - Product Information

Application	WB, ICC
Primary Accession	P13196
Clonality	Monoclonal
Other Names	
ALAS1; ALAS-H; 5-aminolevulinic acid synthase 1; Delta-ALA synthase 1; ALAS3; ALASH;	
Isotype	Rabbit IgG
Host	Rabbit
Calculated MW	70581 Da

Alas1 Antibody - Additional Information

Purification	Affinity-chromatography
Immunogen	A synthesized peptide derived from human Alas1
Description	5-aminolevulinic acid synthase 1 (ALAS-H) and 2 (ALAS-E) are two isoforms of ALAS, an enzyme catalyzing the first step of the heme biosynthetic pathway in mammals. The erythroid-specific isoenzyme, ALAS-E, regulates the first step of hematopoietic cell differentiation and iron metabolism in the liver. ALAS-H is a housekeeping protein which mediates synthesis of early heme in the mitochondria of most cells.
Storage Condition and Buffer	Rabbit IgG in phosphate buffered saline , pH 7.4, 150mM NaCl, 0.02% sodium azide and 50% glycerol. Store at +4°C short term. Store at -20°C long term. Avoid freeze / thaw cycle.

Alas1 Antibody - Protein Information

Name ALAS1

Synonyms ALAS3, ALASH

Function

Catalyzes the pyridoxal 5'-phosphate (PLP)-dependent condensation of succinyl-CoA and glycine to form aminolevulinic acid (ALA), with CoA and CO₂ as by-products.

Cellular Location

Mitochondrion inner membrane {ECO:0000250|UniProtKB:P22557}; Peripheral membrane protein

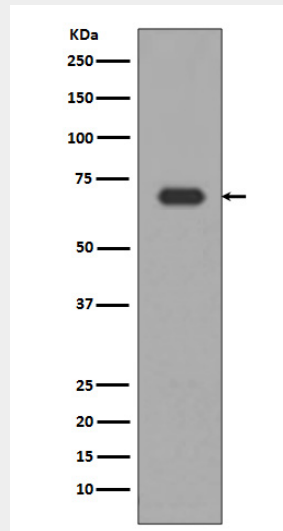
{ECO:0000250|UniProtKB:P22557}. Note=Localizes to the matrix side of the mitochondrion inner membrane. {ECO:0000250|UniProtKB:P22557}

Alas1 Antibody - Protocols

Provided below are standard protocols that you may find useful for product applications.

- [Western Blot](#)
- [Blocking Peptides](#)
- [Dot Blot](#)
- [Immunohistochemistry](#)
- [Immunofluorescence](#)
- [Immunoprecipitation](#)
- [Flow Cytometry](#)
- [Cell Culture](#)

Alas1 Antibody - Images



Western blot analysis of Alas1 expression in HepG2 cell lysate.