

Histone H4 (tri methyl K20) Antibody
Rabbit mAb
Catalog # AP90507**Specification**

Histone H4 (tri methyl K20) Antibody - Product Information

Application	WB, IHC
Primary Accession	P62805
Reactivity	Rat
Clonality	Monoclonal
Other Names	
H4F2; HIST; HIST1H4A; Histone H4; H4K20me3;	
Isotype	Rabbit IgG
Host	Rabbit
Calculated MW	11367 Da

Histone H4 (tri methyl K20) Antibody - Additional Information

Purification	Affinity-chromatography
Immunogen	A synthesized peptide derived from human Histone H4 (tri methyl K20)
Description	Core component of nucleosome. Nucleosomes wrap and compact DNA into chromatin, limiting DNA accessibility to the cellular machineries which require DNA as a template. Histones thereby play a central role in transcription regulation, DNA repair, DNA replication and chromosomal stability. DNA accessibility is regulated via a complex set of post-translational modifications of histones, also called histone code, and nucleosome remodeling.
Storage Condition and Buffer	Rabbit IgG in phosphate buffered saline , pH 7.4, 150mM NaCl, 0.02% sodium azide and 50% glycerol. Store at +4°C short term. Store at -20°C long term. Avoid freeze / thaw cycle.

Histone H4 (tri methyl K20) Antibody - Protein Information**Name** H4C1**Synonyms** H4/A, H4FA, HIST1H4A**Function**

Core component of nucleosome. Nucleosomes wrap and compact DNA into chromatin, limiting DNA accessibility to the cellular machineries which require DNA as a template. Histones thereby play a central role in transcription regulation, DNA repair, DNA replication and chromosomal

stability. DNA accessibility is regulated via a complex set of post-translational modifications of histones, also called histone code, and nucleosome remodeling.

Cellular Location

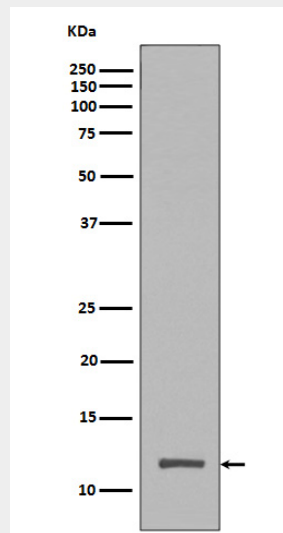
Nucleus. Chromosome.

Histone H4 (tri methyl K20) Antibody - Protocols

Provided below are standard protocols that you may find useful for product applications.

- [Western Blot](#)
- [Blocking Peptides](#)
- [Dot Blot](#)
- [Immunohistochemistry](#)
- [Immunofluorescence](#)
- [Immunoprecipitation](#)
- [Flow Cytometry](#)
- [Cell Culture](#)

Histone H4 (tri methyl K20) Antibody - Images



Western blot analysis of Histone H4 (tri methyl K20) expression in HeLa cell lysate.