

active + pro Caspase 3 Antibody
Rabbit mAb
Catalog # AP90504

Specification

active + pro Caspase 3 Antibody - Product Information

Application	WB, IHC, IP
Primary Accession	P42574
Reactivity	Rat
Clonality	Monoclonal

Other Names

Apopain precursor; CASP-3; CPP-32; CPP32; Caspase-3; Cysteine protease CPP32; ICE3; SCA-1; SREBP cleavage activity 1;

Isotype	Rabbit IgG
Host	Rabbit
Calculated MW	31608 Da

active + pro Caspase 3 Antibody - Additional Information

Purification	Affinity-chromatography
Immunogen	A synthesized peptide derived from human active + pro Caspase 3
Description	This gene encodes a protein which is a member of the cysteine-aspartic acid protease (caspase) family. Sequential activation of caspases plays a central role in the execution-phase of cell apoptosis. Caspases exist as inactive proenzymes which undergo proteolytic processing at conserved aspartic residues to produce 2 subunits, large and small, that dimerize to form the active enzyme.
Storage Condition and Buffer	Rabbit IgG in phosphate buffered saline , pH 7.4, 150mM NaCl, 0.02% sodium azide and 50% glycerol. Store at +4°C short term. Store at -20°C long term. Avoid freeze / thaw cycle.

active + pro Caspase 3 Antibody - Protein Information

Name CASP3

Synonyms CPP32 {ECO:0000303|PubMed:7983002}

Function

Thiol protease that acts as a major effector caspase involved in the execution phase of apoptosis (PubMed:18723680, PubMed:20566630 ,

PubMed: 23650375, PubMed: 35338844, PubMed: 35446120, PubMed: 7596430). Following cleavage and activation by initiator caspases (CASP8, CASP9 and/or CASP10), mediates execution of apoptosis by catalyzing cleavage of many proteins (PubMed: 18723680, PubMed: 20566630, PubMed: 23650375, PubMed: 7596430). At the onset of apoptosis, it proteolytically cleaves poly(ADP-ribose) polymerase PARP1 at a '216-Asp-I-Gly-217' bond (PubMed: 10497198, PubMed: 16374543, PubMed: 7596430, PubMed: 7774019). Cleaves and activates sterol regulatory element binding proteins (SREBPs) between the basic helix-loop-helix leucine zipper domain and the membrane attachment domain (By similarity). Cleaves and activates caspase-6, -7 and -9 (CASP6, CASP7 and CASP9, respectively) (PubMed: 7596430). Cleaves and inactivates interleukin-18 (IL18) (PubMed: 37993714, PubMed: 9334240). Involved in the cleavage of huntingtin (PubMed: 8696339). Triggers cell adhesion in sympathetic neurons through RET cleavage (PubMed: 21357690). Cleaves and inhibits serine/threonine-protein kinase AKT1 in response to oxidative stress (PubMed: 23152800). Acts as an inhibitor of type I interferon production during virus-induced apoptosis by mediating cleavage of antiviral proteins CGAS, IRF3 and MAVS, thereby preventing cytokine overproduction (PubMed: 30878284). Also involved in pyroptosis by mediating cleavage and activation of gasdermin-E (GSDME) (PubMed: 35338844, PubMed: 35446120). Cleaves XRCC4 and phospholipid scramblase proteins XKR4, XKR8 and XKR9, leading to promote phosphatidylserine exposure on apoptotic cell surface (PubMed: 23845944, PubMed: 33725486).

Cellular Location

Cytoplasm.

Tissue Location

Highly expressed in lung, spleen, heart, liver and kidney. Moderate levels in brain and skeletal muscle, and low in testis. Also found in many cell lines, highest expression in cells of the immune system.

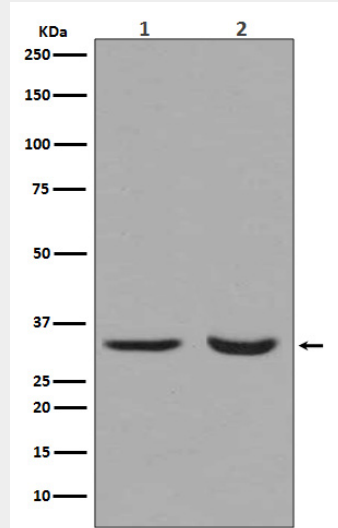
active + pro Caspase 3 Antibody - Protocols

Provided below are standard protocols that you may find useful for product applications.

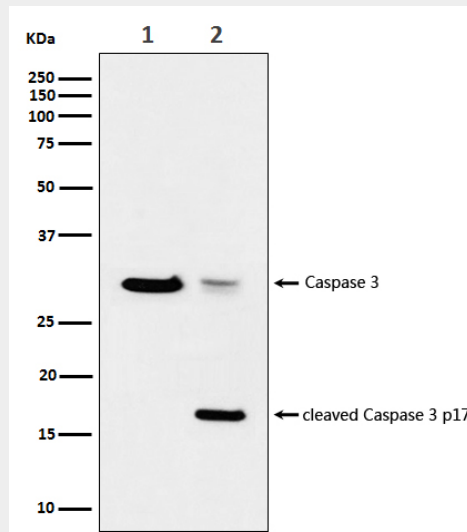
- [Western Blot](#)
- [Blocking Peptides](#)
- [Dot Blot](#)
- [Immunohistochemistry](#)

- [Immunofluorescence](#)
- [Immunoprecipitation](#)
- [Flow Cytometry](#)
- [Cell Culture](#)

active + pro Caspase 3 Antibody - Images



Western blot analysis of Calreticulin expression in (1) Jurkat cell lysate; (2) COLO cells lysate.



Western blot analysis of Calreticulin expression in (1) Jurkat cell lysate; (2) Jurkat cells treated with 1uM staurosporine lysate.