

Histone H3 (mono+di+tri methyl K14) Antibody
Rabbit mAb
Catalog # AP90501

Specification

Histone H3 (mono+di+tri methyl K14) Antibody - Product Information

| | |
|---|------------------------|
| Application | WB, ICC |
| Primary Accession | P68431 |
| Clonality | Monoclonal |
| Other Names | |
| H3 histone; HIST1H3A; Histone cluster 1, H3a;H3/l; HIST3H3; H3K14me1; H3K14me2; H3K14me3; | |
| Isotype | Rabbit IgG |
| Host | Rabbit |
| Calculated MW | 15404 Da |

Histone H3 (mono+di+tri methyl K14) Antibody - Additional Information

| | |
|------------------------------|--|
| Purification | Affinity-chromatography |
| Immunogen | A synthesized peptide derived from human Histone H3 (mono+di+tri methyl K14) |
| Description | Core component of nucleosome. Nucleosomes wrap and compact DNA into chromatin, limiting DNA accessibility to the cellular machineries which require DNA as a template. Histones thereby play a central role in transcription regulation, DNA repair, DNA replication and chromosomal stability. DNA accessibility is regulated via a complex set of post-translational modifications of histones, also called histone code, and nucleosome remodeling. |
| Storage Condition and Buffer | Rabbit IgG in phosphate buffered saline , pH 7.4, 150mM NaCl, 0.02% sodium azide and 50% glycerol. Store at +4°C short term. Store at -20°C long term. Avoid freeze / thaw cycle. |

Histone H3 (mono+di+tri methyl K14) Antibody - Protein Information

Name H3C1 ([HGNC:4766](#))

Synonyms H3FA, HIST1H3A

Function

Core component of nucleosome. Nucleosomes wrap and compact DNA into chromatin, limiting DNA accessibility to the cellular machineries which require DNA as a template. Histones thereby play a central role in transcription regulation, DNA repair, DNA replication and chromosomal stability. DNA accessibility is regulated via a complex set of post-translational modifications of

histones, also called histone code, and nucleosome remodeling.

Cellular Location

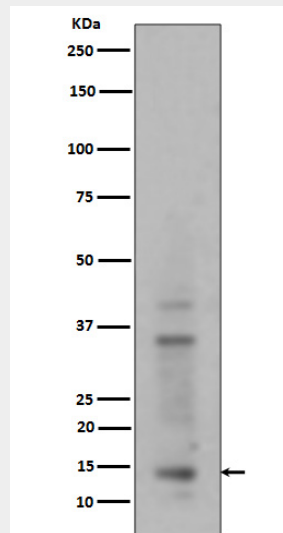
Nucleus. Chromosome.

Histone H3 (mono+di+tri methyl K14) Antibody - Protocols

Provided below are standard protocols that you may find useful for product applications.

- [Western Blot](#)
- [Blocking Peptides](#)
- [Dot Blot](#)
- [Immunohistochemistry](#)
- [Immunofluorescence](#)
- [Immunoprecipitation](#)
- [Flow Cytometry](#)
- [Cell Culture](#)

Histone H3 (mono+di+tri methyl K14) Antibody - Images



Western blot analysis of Histone H3 (mono+di+tri methyl K14) expression in HeLa cell lysate.