

**Caspase-2 Antibody**  
**Rabbit mAb**  
**Catalog # AP90497****Specification**

---

**Caspase-2 Antibody - Product Information**

Application	<b>WB, IHC, FC, ICC</b>
Primary Accession	<a href="#">P42575</a>
Reactivity	<b>Rat</b>
Clonality	<b>Monoclonal</b>

**Other Names**

Caspase-2; Caspase 2; Caspase2; CASP-2; Neural precursor cell expressed developmentally down-regulated protein 2; NEDD-2; Protease ICH-1; CASP2; ICH1; NEDD2

Isotype	<b>Rabbit IgG</b>
Host	<b>Rabbit</b>
Calculated MW	<b>50685 Da</b>

**Caspase-2 Antibody - Additional Information**

Purification	<b>Affinity-chromatography</b>
Immunogen	<b>A synthesized peptide derived from human Caspase-2</b>
Description	<b>Caspase-2 (Nedd2, ICH-1) is an aspartate-specific cysteine protease that is activated in response to various apoptotic stimuli. Caspase-2 is unique among the caspases in that it has features of both upstream caspases (long prodomain) and downstream caspases (DEXD substrate specificity). Caspase-2 is highly expressed in the brain during development and is expressed at low levels in adult tissue.</b>
Storage Condition and Buffer	<b>Rabbit IgG in phosphate buffered saline , pH 7.4, 150mM NaCl, 0.02% sodium azide and 50% glycerol. Store at +4°C short term. Store at -20°C long term. Avoid freeze / thaw cycle.</b>

**Caspase-2 Antibody - Protein Information****Name** CASP2**Synonyms** ICH1, NEDD2**Function**

Is a regulator of the cascade of caspases responsible for apoptosis execution (PubMed:<a href="http://www.uniprot.org/citations/8087842" target="\_blank">8087842</a>, PubMed:<a href="http://www.uniprot.org/citations/11156409" target="\_blank">11156409</a>, PubMed:<a href="http://www.uniprot.org/citations/11156409" target="\_blank">11156409</a>)

<http://www.uniprot.org/citations/15073321> target="\_blank">15073321</a>). Might function by either activating some proteins required for cell death or inactivating proteins necessary for cell survival (PubMed:<a href="http://www.uniprot.org/citations/15073321" target="\_blank">15073321</a>). Associates with PIDD1 and CRADD to form the PIDDosome, a complex that activates CASP2 and triggers apoptosis in response to genotoxic stress (PubMed:<a href="http://www.uniprot.org/citations/15073321" target="\_blank">15073321</a>).

#### Tissue Location

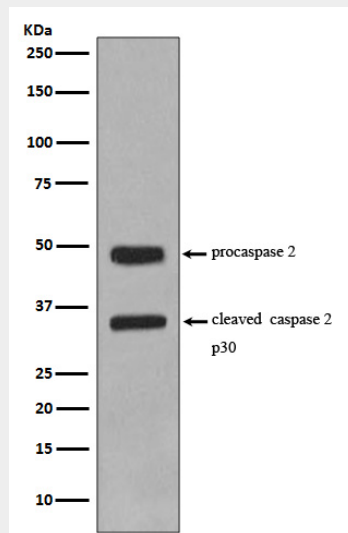
Expressed at higher levels in the embryonic lung, liver and kidney than in the heart and brain. In adults, higher level expression is seen in the placenta, lung, kidney, and pancreas than in the heart, brain, liver and skeletal muscle

#### Caspase-2 Antibody - Protocols

Provided below are standard protocols that you may find useful for product applications.

- [Western Blot](#)
- [Blocking Peptides](#)
- [Dot Blot](#)
- [Immunohistochemistry](#)
- [Immunofluorescence](#)
- [Immunoprecipitation](#)
- [Flow Cytometry](#)
- [Cell Culture](#)

#### Caspase-2 Antibody - Images



Western blot analysis of Caspase-2 expression in Jurkat cell lysate.