

**Cyclin E1 Antibody**  
Rabbit mAb  
Catalog # AP90469

## Specification

---

### Cyclin E1 Antibody - Product Information

Application **WB, FC, ICC, IP**  
Primary Accession [P24864](#)  
Clonality **Monoclonal**  
**Other Names**  
CCNE; CCNE1; cyclin E1; cyclin Es; cyclin Et; G1/S-specific cyclin-E1

Isotype **Rabbit IgG**  
Host **Rabbit**  
Calculated MW **47077 Da**

### Cyclin E1 Antibody - Additional Information

Purification **Affinity-chromatography**  
Immunogen **A synthesized peptide derived from human Cyclin E1**  
Description **Essential for the control of the cell cycle at the G1/S (start) transition. a member of the highly conserved cyclin family, whose members are characterized by a dramatic periodicity in protein abundance through the cell cycle. Cyclins function as regulators of CDK kinases.**  
Storage Condition and Buffer **Rabbit IgG in phosphate buffered saline , pH 7.4, 150mM NaCl, 0.02% sodium azide and 50% glycerol. Store at +4°C short term. Store at -20°C long term. Avoid freeze / thaw cycle.**

### Cyclin E1 Antibody - Protein Information

**Name** CCNE1

**Synonyms** CCNE

#### **Function**

Essential for the control of the cell cycle at the G1/S (start) transition.

#### **Cellular Location**

Nucleus.

#### **Tissue Location**

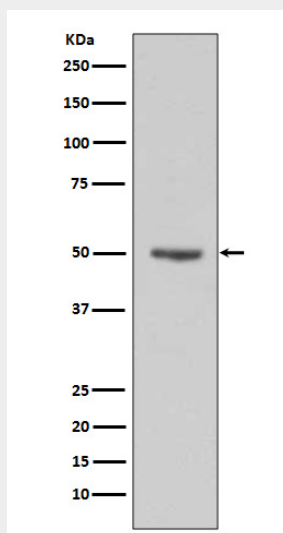
Highly expressed in testis and placenta. Low levels in bronchial epithelial cells.

## Cyclin E1 Antibody - Protocols

Provided below are standard protocols that you may find useful for product applications.

- [Western Blot](#)
- [Blocking Peptides](#)
- [Dot Blot](#)
- [Immunohistochemistry](#)
- [Immunofluorescence](#)
- [Immunoprecipitation](#)
- [Flow Cytometry](#)
- [Cell Culture](#)

## Cyclin E1 Antibody - Images



Western blot analysis of Cyclin E1 expression in HeLa cell lysates.