

PUMA Antibody
Rabbit mAb
Catalog # AP90463

Specification

PUMA Antibody - Product Information

Application	WB, IHC, FC, ICC
Primary Accession	O9BXH1
Reactivity	Rat
Clonality	Monoclonal
Other Names	
BBC3; bcl2 binding component 3; jfy1; puma; p53 up-regulated modulator of apoptosis; PUMA alpha;	
Isotype	Rabbit IgG
Host	Rabbit
Calculated MW	20532 Da

PUMA Antibody - Additional Information

Purification	Affinity-chromatography
Immunogen	A synthesized peptide derived from human PUMA
Description	Essential mediator of p53/TP53-dependent and p53/TP53-independent apoptosis. Functions by promoting partial unfolding of BCL2L1 and dissociation of BCL2L1 from p53/TP53. Regulates ER stress-induced neuronal apoptosis.
Storage Condition and Buffer	Rabbit IgG in phosphate buffered saline , pH 7.4, 150mM NaCl, 0.02% sodium azide and 50% glycerol. Store at +4°C short term. Store at -20°C long term. Avoid freeze / thaw cycle.

PUMA Antibody - Protein Information

Name BBC3

Synonyms PUMA

Function

Essential mediator of p53/TP53-dependent and p53/TP53-independent apoptosis (PubMed: [11463391](http://www.uniprot.org/citations/11463391), PubMed: [23340338](http://www.uniprot.org/citations/23340338)). Promotes partial unfolding of BCL2L1 and dissociation of BCL2L1 from p53/TP53, releasing the bound p53/TP53 to induce apoptosis (PubMed: [23340338](http://www.uniprot.org/citations/23340338)). Regulates ER stress-induced neuronal apoptosis (By similarity).

Cellular Location

Mitochondrion Note=Localized to the mitochondria in order to induce cytochrome c release

Tissue Location

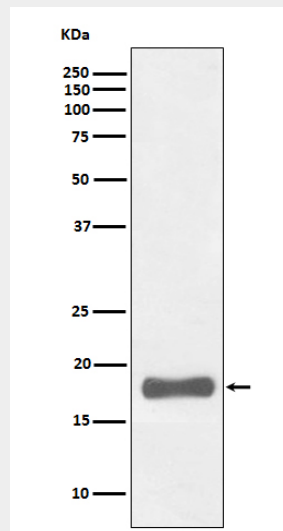
Ubiquitously expressed.

PUMA Antibody - Protocols

Provided below are standard protocols that you may find useful for product applications.

- [Western Blot](#)
- [Blocking Peptides](#)
- [Dot Blot](#)
- [Immunohistochemistry](#)
- [Immunofluorescence](#)
- [Immunoprecipitation](#)
- [Flow Cytometry](#)
- [Cell Culture](#)

PUMA Antibody - Images



Western blot analysis of PUMA expression in K562 cell lysate.