

Phospho-Glycogen synthase 1 (S641) Antibody
Rabbit mAb
Catalog # AP90461

Specification

Phospho-Glycogen synthase 1 (S641) Antibody - Product Information

| | |
|---|------------------------|
| Application | WB, IHC, ICC, IP |
| Primary Accession | P13807 |
| Clonality | Monoclonal |
| Other Names | |
| glycogen [starch] synthase, muscle; glycogen synthase, muscle; GYS; | |
| Isotype | Rabbit IgG |
| Host | Rabbit |
| Calculated MW | 83786 Da |

Phospho-Glycogen synthase 1 (S641) Antibody - Additional Information

| | |
|------------------------------|--|
| Purification | Affinity-chromatography |
| Immunogen | A synthesized peptide derived from human Phospho-Glycogen synthase 1 (S641) |
| Description | Transfers the glycosyl residue from UDP-Glc to the non-reducing end of alpha-1,4-glucan. Allosteric activation by glucose-6-phosphate. Phosphorylation reduces the activity towards UDP-glucose. When in the non-phosphorylated state, glycogen synthase does not require glucose-6-phosphate as an allosteric activator; when phosphorylated it does. |
| Storage Condition and Buffer | Rabbit IgG in phosphate buffered saline , pH 7.4, 150mM NaCl, 0.02% sodium azide and 50% glycerol. Store at +4°C short term. Store at -20°C long term. Avoid freeze / thaw cycle. |

Phospho-Glycogen synthase 1 (S641) Antibody - Protein Information

Name GYS1 ([HGNC:4706](#))

Synonyms GYS

Function

Glycogen synthase participates in the glycogen biosynthetic process along with glycogenin and glycogen branching enzyme. Extends the primer composed of a few glucose units formed by glycogenin by adding new glucose units to it. In this context, glycogen synthase transfers the glycosyl residue from UDP-Glc to the non-reducing end of alpha-1,4-glucan.

Tissue Location

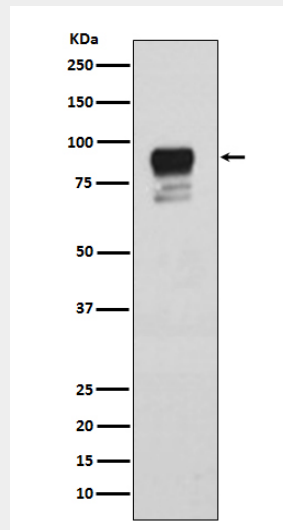
Expressed in skeletal muscle and most other cell types where glycogen is present.

Phospho-Glycogen synthase 1 (S641) Antibody - Protocols

Provided below are standard protocols that you may find useful for product applications.

- [Western Blot](#)
- [Blocking Peptides](#)
- [Dot Blot](#)
- [Immunohistochemistry](#)
- [Immunofluorescence](#)
- [Immunoprecipitation](#)
- [Flow Cytometry](#)
- [Cell Culture](#)

Phospho-Glycogen synthase 1 (S641) Antibody - Images



Western blot analysis of Phospho-Glycogen synthase 1 (S641) expression in HeLa cell lysate.