

**VCAM1 Antibody**  
Rabbit mAb  
Catalog # AP90453

## Specification

---

### VCAM1 Antibody - Product Information

Application	WB, IHC, FC, ICC, IP
Primary Accession	<a href="#">P19320</a>
Reactivity	Rat
Clonality	Monoclonal
<b>Other Names</b>	
VCAM1; L1CAM; VCAM 1; V CAM 1; DKFZp779G2333; CD106;	
Isotype	Rabbit IgG
Host	Rabbit
Calculated MW	81276 Da

### VCAM1 Antibody - Additional Information

Purification	Affinity-chromatography
Immunogen	A synthesized peptide derived from human VCAM1
Description	This gene is a member of the Ig superfamily and encodes a cell surface sialoglycoprotein expressed by cytokine-activated endothelium. This type I membrane protein mediates leukocyte-endothelial cell adhesion and signal transduction, and may play a role in the development of arteriosclerosis and rheumatoid arthritis. Two alternatively spliced transcripts encoding different isoforms have been described for this gene. Tissue specificity:
Storage Condition and Buffer	Rabbit IgG in phosphate buffered saline , pH 7.4, 150mM NaCl, 0.02% sodium azide and 50% glycerol. Store at +4°C short term. Store at -20°C long term. Avoid freeze / thaw cycle.

### VCAM1 Antibody - Protein Information

**Name** VCAM1

#### Function

Cell adhesion glycoprotein predominantly expressed on the surface of endothelial cells that plays an important role in immune surveillance and inflammation (PubMed:<a href="http://www.uniprot.org/citations/31310649" target="\_blank">31310649</a>). Acts as a major regulator of leukocyte adhesion to the endothelium through interaction with different types

of integrins (PubMed:<a href="http://www.uniprot.org/citations/10209034" target="\_blank">10209034</a>). During inflammatory responses, binds ligands on the surface of activated endothelial cells to initiate the activation of calcium channels and the plasma membrane-associated small GTPase RAC1 leading to leukocyte transendothelial migration (PubMed:<a href="http://www.uniprot.org/citations/22970700" target="\_blank">22970700</a>). Serves also as a quality- control checkpoint for entry into bone marrow by providing a 'don't-eat-me' stamping in the context of major histocompatibility complex (MHC) class-I presentation (PubMed:<a href="http://www.uniprot.org/citations/35210567" target="\_blank">35210567</a>).

#### Cellular Location

[Vascular cell adhesion protein 1]: Cell membrane; Single-pass type I membrane protein

#### Tissue Location

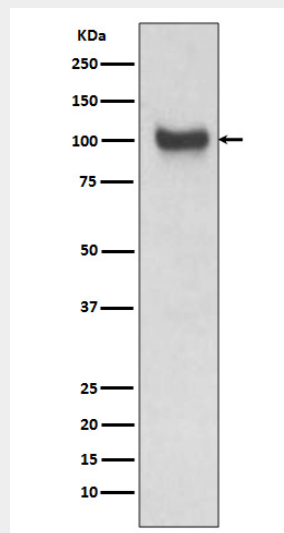
Expressed on inflamed vascular endothelium, as well as on macrophage-like and dendritic cell types in both normal and inflamed tissue

### VCAM1 Antibody - Protocols

Provided below are standard protocols that you may find useful for product applications.

- [Western Blot](#)
- [Blocking Peptides](#)
- [Dot Blot](#)
- [Immunohistochemistry](#)
- [Immunofluorescence](#)
- [Immunoprecipitation](#)
- [Flow Cytometry](#)
- [Cell Culture](#)

### VCAM1 Antibody - Images



Western blot analysis of VCAM1 expression in Mouse kidney lysate.