

**Ras Antibody**  
Rabbit mAb  
Catalog # AP90445

## Specification

---

### Ras Antibody - Product Information

Application	WB, FC, IP
Primary Accession	<a href="#">P01111</a>
Reactivity	Rat
Clonality	Monoclonal
<b>Other Names</b>	
GTPase HRas;GTPase KRas;GTPase NRas;H-Ras-1;HAMS;HRAS;HRAS1;K-RAS;N-RAS;NRAS;p21ras;RASH1;RASK2;Transforming protein p21	
Isotype	Rabbit IgG
Host	Rabbit
Calculated MW	21229 Da

### Ras Antibody - Additional Information

Purification	Affinity-chromatography
Immunogen	A synthesized peptide derived from human Ras
Description	HRas a small GTPase protein of the Ras family. Alternates between an inactive form bound to GDP and an active form bound to GTP. Activated by a guanine nucleotide-exchange factor (GEF) and inactivated by a GTPase-activating protein (GAP). Mutations are implicated in a variety of human tumors.
Storage Condition and Buffer	Rabbit IgG in phosphate buffered saline , pH 7.4, 150mM NaCl, 0.02% sodium azide and 50% glycerol. Store at +4°C short term. Store at -20°C long term. Avoid freeze / thaw cycle.

### Ras Antibody - Protein Information

**Name** NRAS

**Synonyms** HRAS1

**Function**

Ras proteins bind GDP/GTP and possess intrinsic GTPase activity.

**Cellular Location**

Cell membrane; Lipid-anchor; Cytoplasmic side. Golgi apparatus membrane; Lipid-anchor

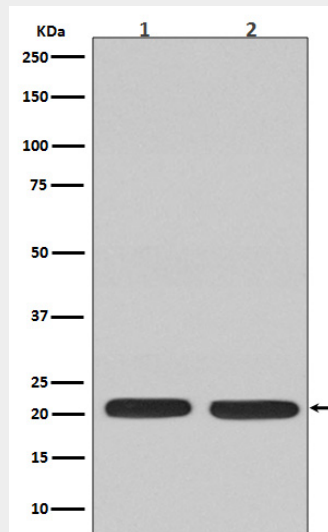
Note=Shuttles between the plasma membrane and the Golgi apparatus

## Ras Antibody - Protocols

Provided below are standard protocols that you may find useful for product applications.

- [Western Blot](#)
- [Blocking Peptides](#)
- [Dot Blot](#)
- [Immunohistochemistry](#)
- [Immunofluorescence](#)
- [Immunoprecipitation](#)
- [Flow Cytometry](#)
- [Cell Culture](#)

## Ras Antibody - Images



Western blot analysis of Ras expression in (1) C6 cell lysate; (2) Jurkat cell lysate.