

**CARD6 Antibody (Center)**  
**Affinity Purified Rabbit Polyclonal Antibody (Pab)**  
**Catalog # AP9043c**

**Specification**

---

**CARD6 Antibody (Center) - Product Information**

Application	<b>WB, IHC-P,E</b>
Primary Accession	<a href="#">O9BX69</a>
Reactivity	<b>Human</b>
Host	<b>Rabbit</b>
Clonality	<b>Polyclonal</b>
Isotype	<b>Rabbit IgG</b>
Calculated MW	<b>116468</b>
Antigen Region	<b>755-787</b>

**CARD6 Antibody (Center) - Additional Information**

**Gene ID** 84674

**Other Names**

Caspase recruitment domain-containing protein 6, CARD6

**Target/Specificity**

This CARD6 antibody is generated from rabbits immunized with a KLH conjugated synthetic peptide selected from the Center region of human CARD6.

**Dilution**

WB~~1:1000

IHC-P~~1:25

**Format**

Purified polyclonal antibody supplied in PBS with 0.09% (W/V) sodium azide. This antibody is purified through a protein A column, followed by peptide affinity purification.

**Storage**

Maintain refrigerated at 2-8°C for up to 2 weeks. For long term storage store at -20°C in small aliquots to prevent freeze-thaw cycles.

**Precautions**

CARD6 Antibody (Center) is for research use only and not for use in diagnostic or therapeutic procedures.

**CARD6 Antibody (Center) - Protein Information**

**Name** CARD6

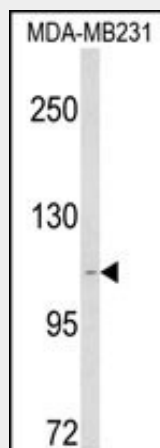
**Function** May be involved in apoptosis.

## CARD6 Antibody (Center) - Protocols

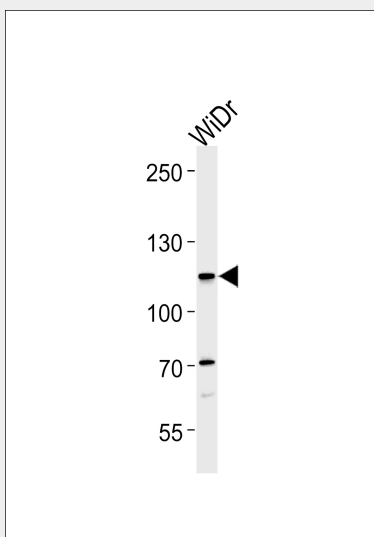
Provided below are standard protocols that you may find useful for product applications.

- [Western Blot](#)
- [Blocking Peptides](#)
- [Dot Blot](#)
- [Immunohistochemistry](#)
- [Immunofluorescence](#)
- [Immunoprecipitation](#)
- [Flow Cytometry](#)
- [Cell Culture](#)

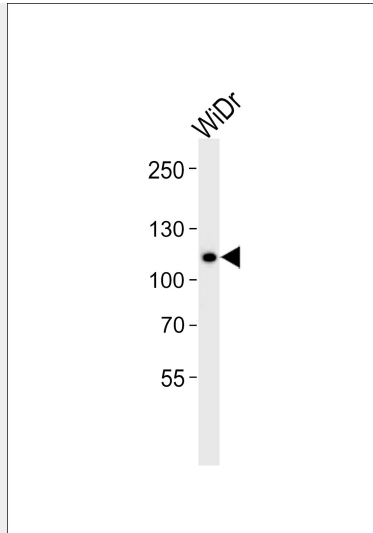
## CARD6 Antibody (Center) - Images



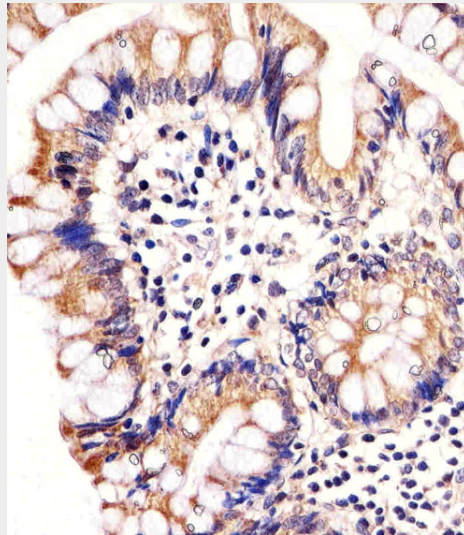
Western blot analysis of CARD6 Antibody (Center) (Cat. #AP9043c) in MDA-MB231 cell line lysates (35ug/lane). CARD6 (arrow) was detected using the purified Pab.



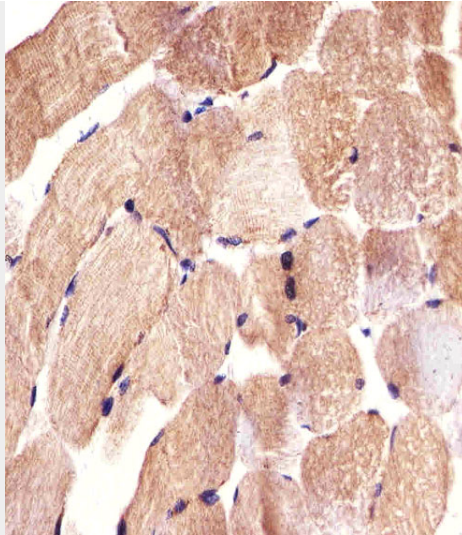
CARD6 Antibody (Center) (Cat.# AP9043c) western blot analysis in WiDr cell line lysates (35ug/lane). This demonstrates the CARD6 antibody detected the CARD6 protein (arrow).



Western blot analysis of lysate from WiDr cell line, using CARD6 Antibody (Center)(Cat. #AP9043c). AP9043c was diluted at 1:1000. A goat anti-rabbit IgG H&L(HRP) at 1:5000 dilution was used as the secondary antibody. Lysate at 20ug.



Immunohistochemical analysis of paraffin-embedded H. colon section using CARD6 Antibody (Center)(Cat#AP9043c). AP9043c was diluted at 1:25 dilution. A undiluted biotinylated goat polyvalent antibody was used as the secondary, followed by DAB staining.



Immunohistochemical analysis of paraffin-embedded H. skeletal muscle section using CARD6 Antibody (Center)(Cat#AP9043c). AP9043c was diluted at 1:25 dilution. A undiluted biotinylated goat polyvalent antibody was used as the secondary, followed by DAB staining.

#### **CARD6 Antibody (Center) - Background**

CARD6 is a protein that contains a caspase recruitment domain (CARD), an antiparallel six-helical bundle that mediates homotypic protein-protein interactions. The encoded protein is a microtubule-associated protein that has been shown to interact with receptor-interacting protein kinases and positively modulate signal transduction pathways converging on activation of the inducible transcription factor NF- $\kappa$ B.

#### **CARD6 Antibody (Center) - References**

Kim,S.S., et.al., Pathology 42 (1), 50-53 (2010)  
Olsen,J.V., et.al., Cell 127 (3), 635-648 (2006)