

ICAM1 Antibody
Rabbit mAb
Catalog # AP90426**Specification**

ICAM1 Antibody - Product Information

| | |
|---------------------------------|------------------------|
| Application | WB, IHC, FC, ICC |
| Primary Accession | P05362 |
| Clonality | Monoclonal |
| Other Names | |
| BB2; CD54; P3.58; MyD10; ICAM1; | |
| Isotype | Rabbit IgG |
| Host | Rabbit |
| Calculated MW | 57825 Da |

ICAM1 Antibody - Additional Information

| | |
|------------------------------|---|
| Purification | Affinity-chromatography |
| Immunogen | A synthesized peptide derived from human ICAM1 |
| Description | ICAM1 a type I membrane protein of the immunoglobulin superfamily. Is a ligand for the leukocyte adhesion LFA-1 protein (Integrin alpha-L/beta-2) and a Rhinovirus receptor. Typically expressed on endothelial cells and cells of the immune system. |
| Storage Condition and Buffer | Rabbit IgG in phosphate buffered saline , pH 7.4, 150mM NaCl, 0.02% sodium azide and 50% glycerol. Store at +4°C short term. Store at -20°C long term. Avoid freeze / thaw cycle. |

ICAM1 Antibody - Protein Information**Name** ICAM1**Function**

ICAM proteins are ligands for the leukocyte adhesion protein LFA-1 (integrin alpha-L/beta-2). During leukocyte trans-endothelial migration, ICAM1 engagement promotes the assembly of endothelial apical cups through ARHGEF26/SGEF and RHOG activation.

Cellular Location

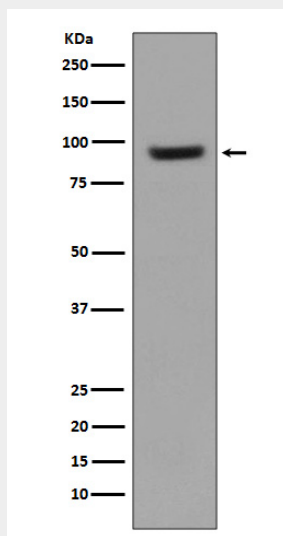
Membrane; Single-pass type I membrane protein.

ICAM1 Antibody - Protocols

Provided below are standard protocols that you may find useful for product applications.

- [Western Blot](#)
- [Blocking Peptides](#)
- [Dot Blot](#)
- [Immunohistochemistry](#)
- [Immunofluorescence](#)
- [Immunoprecipitation](#)
- [Flow Cytometry](#)
- [Cell Culture](#)

ICAM1 Antibody - Images



Western blot analysis of ICAM1 expression in Raji cell lysate.