

Cytokeratin 15 Antibody
Rabbit mAb
Catalog # AP90424

Specification

Cytokeratin 15 Antibody - Product Information

Application **WB, IHC, FC, ICC**
Primary Accession **[P19012](#)**
Clonality **Monoclonal**

Other Names

CK-15; CK15; cytokeratin15; K15; K1C15; K1CO; keratin 15; Keratin-15; keratin-15, beta; KRT15; KRTB; type I cytoskeletal 15;

Isotype **Rabbit IgG**
Host **Rabbit**
Calculated MW **49212 Da**

Cytokeratin 15 Antibody - Additional Information

Purification **Affinity-chromatography**
Immunogen **A synthesized peptide derived from human Cytokeratin 15**

Description **The keratins are intermediate filament proteins responsible for the structural integrity of epithelial cells and are subdivided into cytokeratins and hair keratins. There are two types of cytoskeletal and microfibrillar keratin: type I (acidic; 40-55 kDa) [K9 to K20] and type II (neutral to basic; 56-70 kDa) [K1 to K8]. Both a basic and an acidic keratin are required for filament assembly. Note: This description may include information from UniProtKB.**

Storage Condition and Buffer **Rabbit IgG in phosphate buffered saline , pH 7.4, 150mM NaCl, 0.02% sodium azide and 50% glycerol. Store at +4°C short term. Store at -20°C long term. Avoid freeze / thaw cycle.**

Cytokeratin 15 Antibody - Protein Information

Name KRT15

Synonyms KRTB

Tissue Location

Expressed in a discontinuous manner in the basal cell layer of adult skin epidermis, but continuously in the basal layer of fetal skin epidermis and nail. Also expressed in the outer root

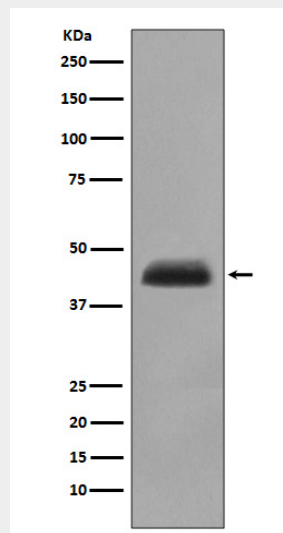
sheath above the hair bulb in hair follicle (at protein level) Expressed homogeneously in all cell layers of the esophagus and exocervix, but detected in the basal cell layer only of oral mucosa, skin and in the basal plus the next two layers of the suprabasal epithelium of the palate.

Cytokeratin 15 Antibody - Protocols

Provided below are standard protocols that you may find useful for product applications.

- [Western Blot](#)
- [Blocking Peptides](#)
- [Dot Blot](#)
- [Immunohistochemistry](#)
- [Immunofluorescence](#)
- [Immunoprecipitation](#)
- [Flow Cytometry](#)
- [Cell Culture](#)

Cytokeratin 15 Antibody - Images



Western blot analysis of Cytokeratin 15 expression in human fetal thymus lysate.