

**Cyclophilin B Antibody**  
Rabbit mAb  
Catalog # AP90422**Specification**

---

**Cyclophilin B Antibody - Product Information**

Application	WB
Primary Accession	<a href="#">P23284</a>
Reactivity	Rat
Clonality	Monoclonal
<b>Other Names</b>	
Cphn2; Cyclophilin B; OI9; CYPB; PPIase B; PPIB; SCYLP; Rotamase B;	
Isotype	Rabbit IgG
Host	Rabbit
Calculated MW	23743 Da

**Cyclophilin B Antibody - Additional Information**

Purification	Affinity-chromatography
Immunogen	A synthesized peptide derived from human Cyclophilin B
Description	PPIases accelerate the folding of proteins. It catalyzes the cis-trans isomerization of proline imidic peptide bonds in oligopeptides.
Storage Condition and Buffer	Rabbit IgG in phosphate buffered saline , pH 7.4, 150mM NaCl, 0.02% sodium azide and 50% glycerol. Store at +4°C short term. Store at -20°C long term. Avoid freeze / thaw cycle.

**Cyclophilin B Antibody - Protein Information****Name** PPIB**Synonyms** CYPB**Function**

PPIase that catalyzes the cis-trans isomerization of proline imidic peptide bonds in oligopeptides and may therefore assist protein folding.

**Cellular Location**

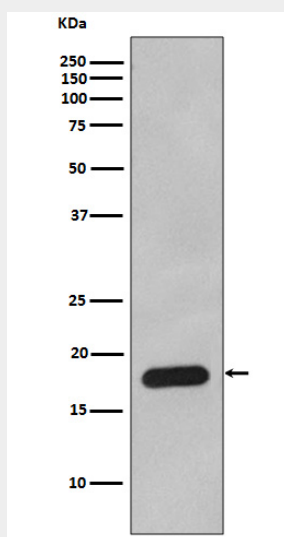
Virion. Note=(Microbial infection)

**Cyclophilin B Antibody - Protocols**

Provided below are standard protocols that you may find useful for product applications.

- [Western Blot](#)
- [Blocking Peptides](#)
- [Dot Blot](#)
- [Immunohistochemistry](#)
- [Immunofluorescence](#)
- [Immunoprecipitation](#)
- [Flow Cytometry](#)
- [Cell Culture](#)

### Cyclophilin B Antibody - Images



Western blot analysis of Cyclophilin B expression in HepG2 cell lysate.