

**Maltose Binding Protein Antibody**  
**Rabbit mAb**  
**Catalog # AP90421****Specification**

---

**Maltose Binding Protein Antibody - Product Information**

Application	WB
Primary Accession	<a href="#">P0AEX9</a>
Reactivity	All Species
Clonality	Monoclonal
<b>Other Names</b>	
MMBP; MalE; Maltose Binding Protein; Maltose binding periplasmic protein;	
Isotype	Rabbit IgG
Host	Rabbit
Calculated MW	43388 Da

**Maltose Binding Protein Antibody - Additional Information**

Purification	Affinity-chromatography
Immunogen	A synthesized peptide derived from human Maltose Binding Protein
Description	Epitope tagging offers an easy and universal strategy for the identification and purification of proteins derived by recombinant DNA technology. The insertion of a Maltose Binding Protein (MBP) tag creates a stable fusion product that does not interfere with the bioactivity of the protein or with the biodistribution of the MBP tagged product. Cleavage by factor Xa separates MBP from its partner protein.
Storage Condition and Buffer	Rabbit IgG in phosphate buffered saline , pH 7.4, 150mM NaCl, 0.02% sodium azide and 50% glycerol. Store at +4°C short term. Store at -20°C long term. Avoid freeze / thaw cycle.

**Maltose Binding Protein Antibody - Protein Information****Name** malE {ECO:0000303|PubMed:4215651}**Function**

Part of the ABC transporter complex MalEFGK involved in maltose/maltodextrin import. Binds maltose and higher maltodextrins such as maltotriose.

**Cellular Location**

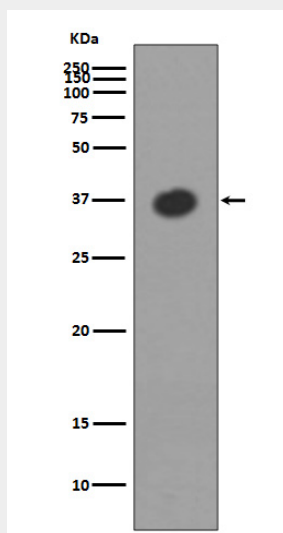
Periplasm.

## Maltose Binding Protein Antibody - Protocols

Provided below are standard protocols that you may find useful for product applications.

- [Western Blot](#)
- [Blocking Peptides](#)
- [Dot Blot](#)
- [Immunohistochemistry](#)
- [Immunofluorescence](#)
- [Immunoprecipitation](#)
- [Flow Cytometry](#)
- [Cell Culture](#)

## Maltose Binding Protein Antibody - Images



Western blot analysis of MBP expression in Escherichia coli lysate.