

**EpCAM Antibody**  
Rabbit mAb  
Catalog # AP90414

## Specification

---

### EpCAM Antibody - Product Information

Application	WB
Primary Accession	<a href="#">P16422</a>
Reactivity	Rat
Clonality	Monoclonal
<b>Other Names</b>	
ESA; KSA; M4S1; MK1; DIAR5; EGP2;EGP40; KS1/4; MIC18; TROP1; TACSTD1; EPCAM;	
Isotype	Rabbit IgG
Host	Rabbit
Calculated MW	34932 Da

### EpCAM Antibody - Additional Information

Purification	<b>Affinity-chromatography</b>
Immunogen	<b>A synthesized peptide derived from human EpCAM</b>
Description	<b>May act as a physical homophilic interaction molecule between intestinal epithelial cells (IECs) and intraepithelial lymphocytes (IELs) at the mucosal epithelium for providing immunological barrier as a first line of defense against mucosal infection. Plays a role in embryonic stem cells proliferation and differentiation. Up-regulates the expression of FABP5, MYC and cyclins A and E.</b>
Storage Condition and Buffer	<b>Rabbit IgG in phosphate buffered saline , pH 7.4, 150mM NaCl, 0.02% sodium azide and 50% glycerol. Store at +4°C short term. Store at -20°C long term. Avoid freeze / thaw cycle.</b>

### EpCAM Antibody - Protein Information

**Name** EPCAM

**Synonyms** GA733-2, M1S2, M4S1, MIC18, TACSTD1, TRO

#### **Function**

May act as a physical homophilic interaction molecule between intestinal epithelial cells (IECs) and intraepithelial lymphocytes (IELs) at the mucosal epithelium for providing immunological barrier as a first line of defense against mucosal infection. Plays a role in embryonic stem cells proliferation

and differentiation. Up-regulates the expression of FABP5, MYC and cyclins A and E.

#### Cellular Location

Lateral cell membrane; Single-pass type I membrane protein. Cell junction, tight junction.  
Note=Colocalizes with CLDN7 at the lateral cell membrane and tight junction

#### Tissue Location

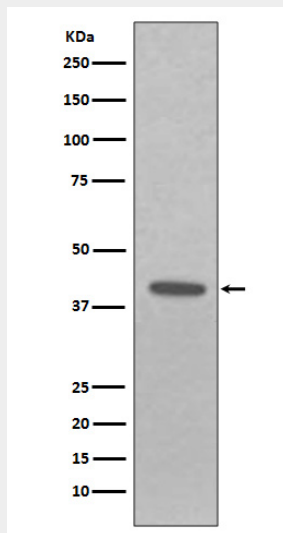
Highly and selectively expressed by undifferentiated rather than differentiated embryonic stem cells (ESC) Levels rapidly diminish as soon as ESC's differentiate (at protein levels). Expressed in almost all epithelial cell membranes but not on mesodermal or neural cell membranes. Found on the surface of adenocarcinoma.

### EpCAM Antibody - Protocols

Provided below are standard protocols that you may find useful for product applications.

- [Western Blot](#)
- [Blocking Peptides](#)
- [Dot Blot](#)
- [Immunohistochemistry](#)
- [Immunofluorescence](#)
- [Immunoprecipitation](#)
- [Flow Cytometry](#)
- [Cell Culture](#)

### EpCAM Antibody - Images



Western blot analysis of EpCAM expression in A431 cell lysate.