

Bak Antibody
Rabbit mAb
Catalog # AP90411

Specification

Bak Antibody - Product Information

Application	WB, IHC, FC, ICC, IP
Primary Accession	Q16611
Clonality	Monoclonal
Other Names	
BAK1;BAK;BAK-LIKE;BCL2L7;CDN1;	
Isotype	Rabbit IgG
Host	Rabbit
Calculated MW	23409 Da

Bak Antibody - Additional Information

Purification	Affinity-chromatography
Immunogen	A synthesized peptide derived from human Bak
Description	Bak is a proapoptotic member of the Bcl-2 family. This protein is located on the outer membrane of mitochondria and is an essential component for transduction of apoptotic signals through the mitochondrial pathway. Upon apoptotic stimulation, an upstream stimulator like truncated BID (tBID) induces conformational changes in Bak to form oligomer channels in the mitochondrial membrane for cytochrome c release. The release of cytochrome c to the cytosol activates the caspase-9 pathway and eventually leads to cell death.
Storage Condition and Buffer	Rabbit IgG in phosphate buffered saline , pH 7.4, 150mM NaCl, 0.02% sodium azide and 50% glycerol. Store at +4°C short term. Store at -20°C long term. Avoid freeze / thaw cycle.

Bak Antibody - Protein Information

Name BAK1

Synonyms BAK, BCL2L7, CDN1

Function

Plays a role in the mitochondrial apoptotic process. Upon arrival of cell death signals, promotes

mitochondrial outer membrane (MOM) permeabilization by oligomerizing to form pores within the MOM. This releases apoptogenic factors into the cytosol, including cytochrome c, promoting the activation of caspase 9 which in turn processes and activates the effector caspases.

Cellular Location

Mitochondrion outer membrane; Single-pass membrane protein

Tissue Location

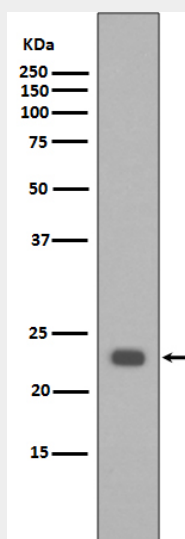
Expressed in a wide variety of tissues, with highest levels in the heart and skeletal muscle

Bak Antibody - Protocols

Provided below are standard protocols that you may find useful for product applications.

- [Western Blot](#)
- [Blocking Peptides](#)
- [Dot Blot](#)
- [Immunohistochemistry](#)
- [Immunofluorescence](#)
- [Immunoprecipitation](#)
- [Flow Cytometry](#)
- [Cell Culture](#)

Bak Antibody - Images



Western blot analysis of extracts of HeLa cell lysate, using BAK1 antibody.